

MSGC 95.0058

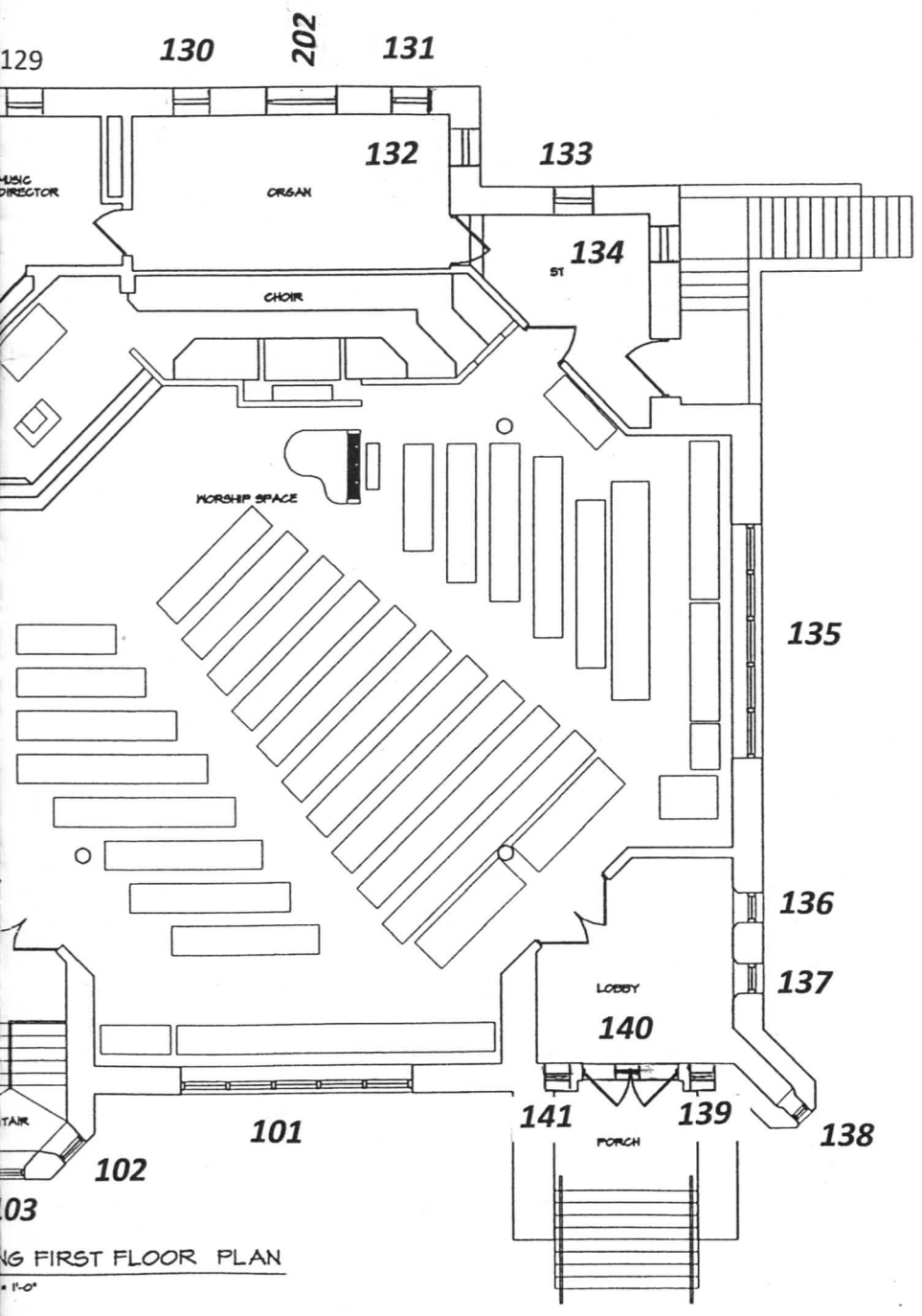
Mason First Presbyterian Church

Mason, Michigan

WINDOW INVENTORY

Olded Numbers Are Stained Glass Windows

Page 1 of 2



NO.	REVISION	DATE

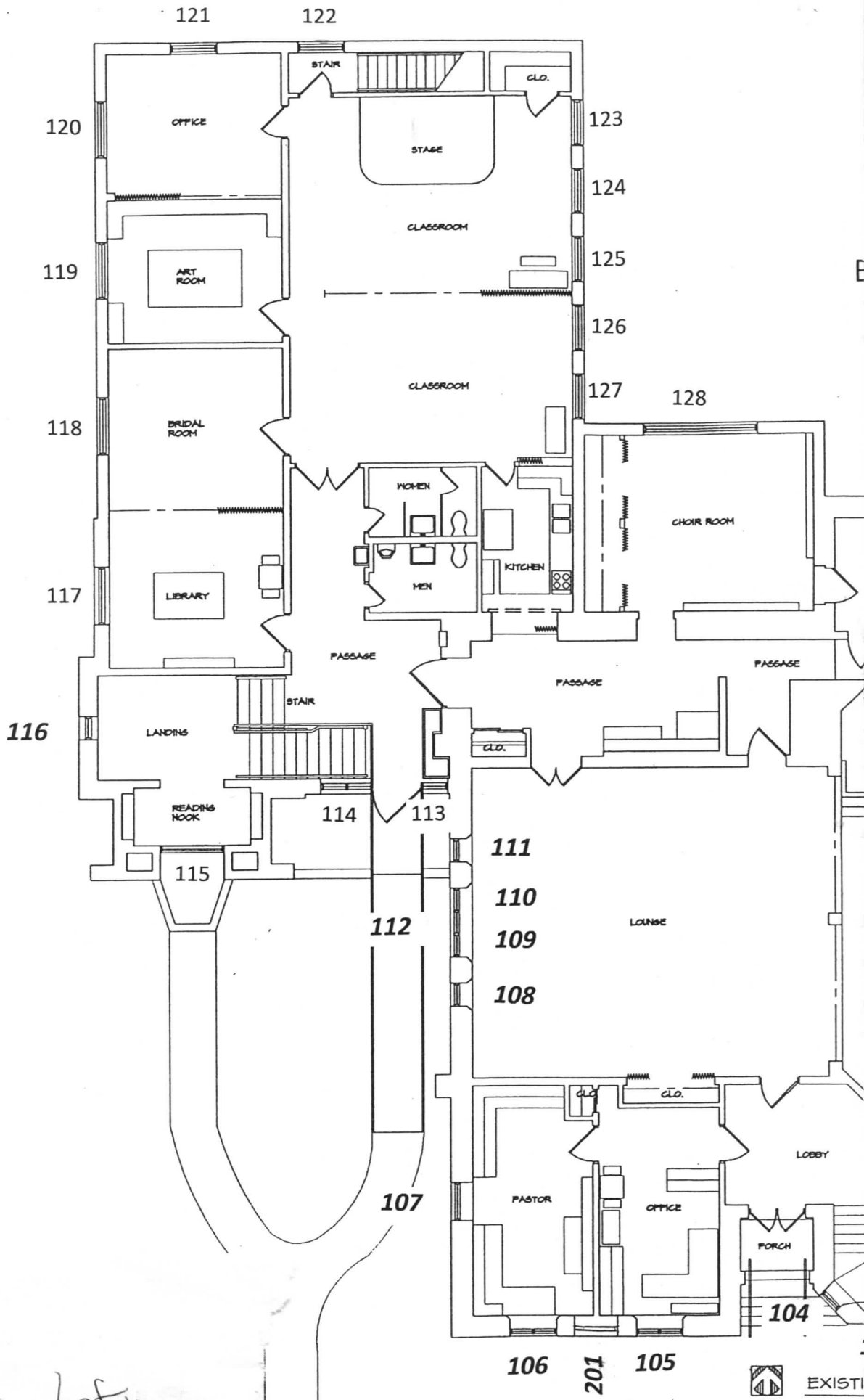

 100 S. JEFFERSON AVE.
 SUITE 601
 SAGINAW, MICHIGAN 48607
 989-752-8107
WIGEN TINCKNELL MEYER & ASSOCIATES, INC.
 ARCHITECTS AND PLANNERS

PROJECT TITLE
 BUILDING STUDY FOR:
MASON FIRST PRESBYTERIAN CHURCH
 MASON, MICHIGAN

SHEET TITLE
EXISTING FIRST FLOOR PLAN

PROJECT NUMBER 20612	SHEET NUMBER E3
PROJECT DATE OCTOBER 3, 2006	
CHECKED BY DHT	

EXISTING FIRST FLOOR PLAN



First Floor - Left

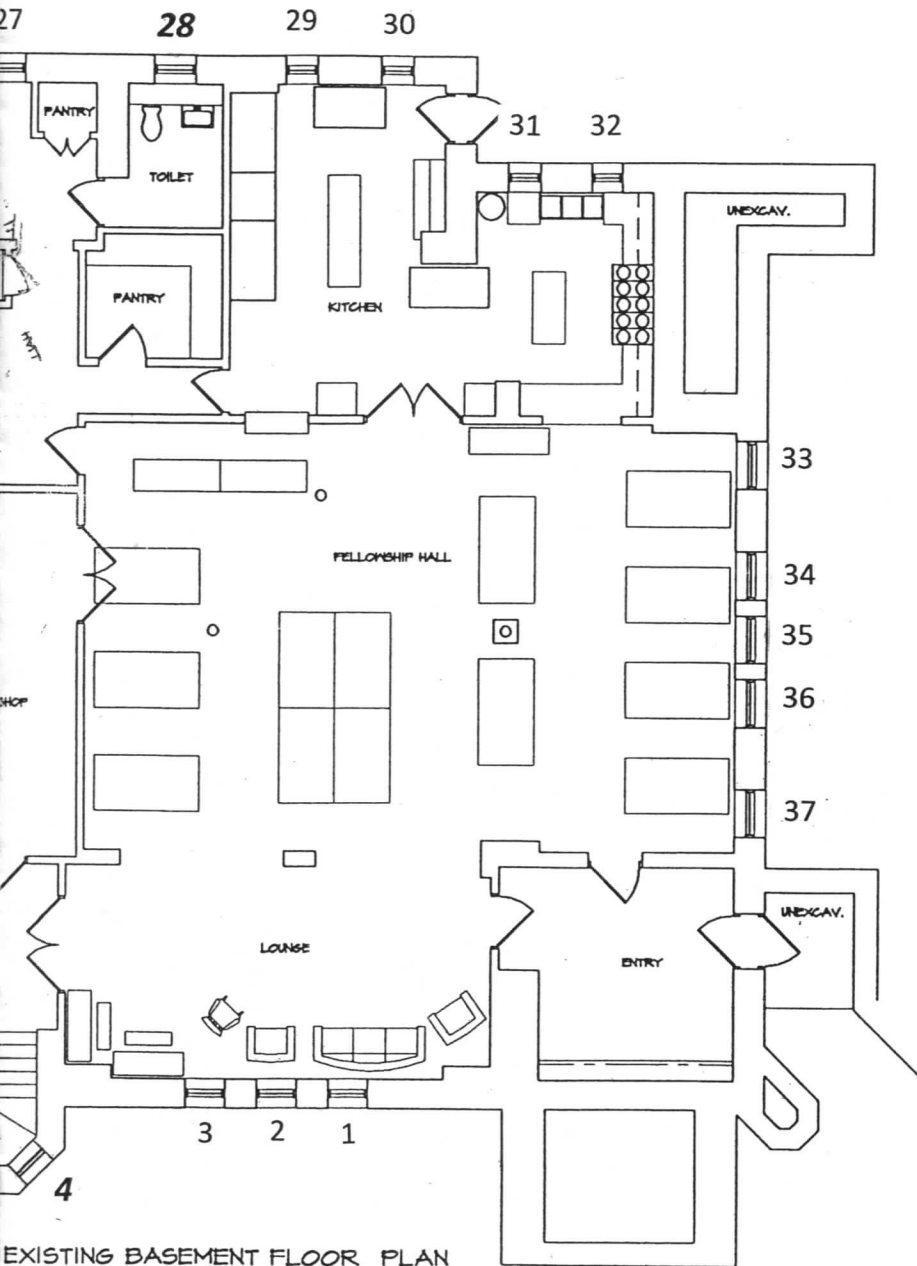
Mason First Presbyterian Church

Mason, Michigan

WINDOW INVENTORY


Bolded Numbers Are Stained Glass Windows

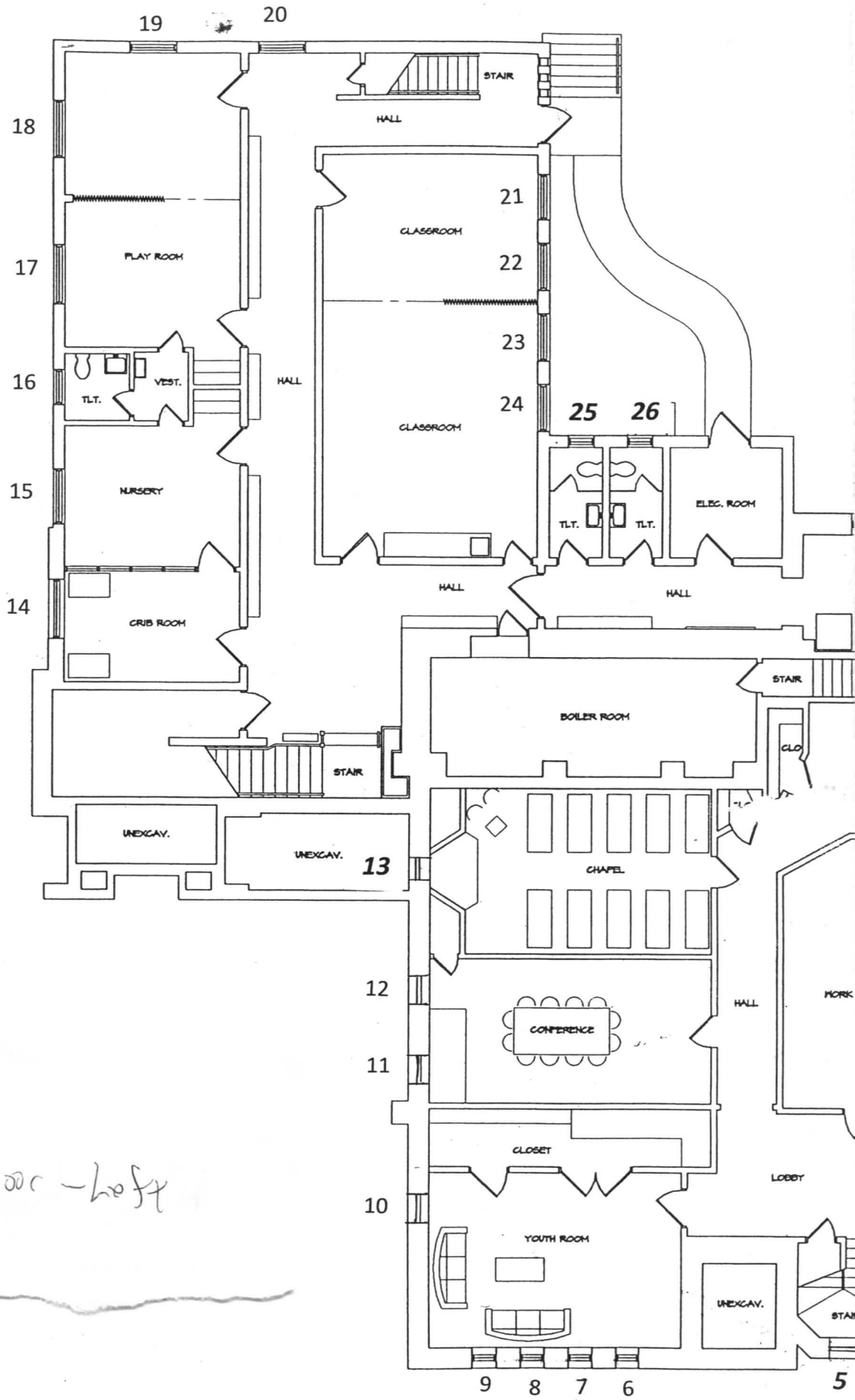
Page 2 of 2



EXISTING BASEMENT FLOOR PLAN

SCALE: 3/8" = 1'-0"

NO.	REVISION	DATE
 100 S. JEFFERSON AVE. SUITE 601 SAGINAW, MICHIGAN 48607 989-752-8107		
WIGEN TINCKNELL MEYER & ASSOCIATES, INC. ARCHITECTS AND PLANNERS		
PROJECT TITLE BUILDING STUDY FOR: MASON FIRST PRESBYTERIAN CHURCH MASON, MICHIGAN		
SHEET TITLE EXISTING BASEMENT FLOOR PLAN		
PROJECT NUMBER	20612	SHEET NUMBER
PROJECT DATE	OCTOBER 3, 2006	E2
CHECKED BY	DHT	



Basement Floor - Lobby



NORTH