

Fshino, Iwao. Papers.
University of the Ryukyus

Chief of Party Publicity - articles and publications, 1964, undated.

Folder 33
Box 5385
Coll. UA 17.348

Ishino Heads MSU Group

EAST LANSING, Mich. (UPI) —Dr. Iwao Ishino, professor of sociology and anthropology at Michigan State University, has been named chief of MSU's Advisory Group at the University of the Ryukyus in Okinawa.

Michigan State University has provided advisory and technical assistance to the Okinawan Institution under a contract with the U.S. Army since 1951. It now provides four full time faculty and staff members, and five short term consultants.

Ishino joined the Okinawan university in July, 1963 as professor of sociology and anthropology.

In 1958 he was Fulbright Professor in cultural anthropology at the University of Tokyo.

His published works include the book "Kokoku-No-Shakaigaku" (Sociology of Advertising); and "Paternalism in the Japanese Economy" and "Social Problems," of which he was co-author.

NEW MSU CHIEF

Michigan State University (MSU) has announced the appointment of Dr. Iwao Ishino as chief of the MSU Group at the University of the Ryukyus.

Announcement of Ishino's appointment was contained in a letter from Glen L. Taggart, dean of international programs, MSU, to High Commissioner Paul W. Caraway. Ishino succeeds Dr. Thomas H. King who returned to his MSU post at East Lansing, Mich. earlier in March.

Dr. Ishino joined the MSUG in July, 1963, as professor of sociology and anthropology. He came here from the MSU campus where he had been a professor of sociology and anthropology at the University of Tokyo, Japan. From 1951 to 1956 he was an assistant professor of sociology and anthropology at Ohio State University.

Born in San Diego, Cal., on Mar. 10, 1921, Dr. Ishino was educated at San Diego State and at Harvard University where he received his doctor of philosophy degree in 1954.

His publications include articles in professional journals and books on sociology and Japanese culture. His books include "Kokoku-no-Shakaigaku (Sociology of Advertising)," "Paternalism in the Japanese Economy," and "American Social Problems."

He is fellow of the American Anthropological Association and the American Association for the Advancement of Science and a member of the Society for Applied Anthropology, the Central States Anthropological Society, the Association for Asian Studies, the Michigan Academy of Art, Science and Letters and the International House of Japan.

Sunday, April 12, 1964

New Chief

NAHA, Okinawa — Michigan State University has announced the appointment of Dr. Iwao Ishino as chief of its group at the University of the Ryukyus.

Announcement of Ishino's appointment was contained in a letter from Glen L. Taggart, dean of international programs, MSU, to High Commissioner Paul W. Caraway. Ishino succeeds Dr. Thomas H. King who returned to his MSU post at East Lansing, Mich., earlier in March.

伊野博士 米大の
 教授団長に石野博士



伊野博士 米大の
 教授団長の
 伊野博士
 米大の

伊野博士は一九六三年十月に
 学会と人類学の教授として米大
 のミシガン州立大学東洋学部
 知わつて来られたことである。
 同博士は一九二二年にワシントン
 州立大学で博士号を得、ワシ
 ントン州立大学、オハイオ
 バートン大学、一九五四年に
 はハートランド大学の理事を
 与られた。現在は米大の人類学
 協会理事及び東洋学部の特別会
 員である。旧用人類学部長として
 米大で長く勤務した。その間、
 米大の人類学、東洋学、及び
 言語学、歴史学、国際関係学等
 なる多くの分野に貢献した。



Kubasaki senior high school students who are finalists in the Fort Buckner Women's club scholarship award competition were guests at a luncheon given by the scholarship committee at the Fort Buckner Officers' club on Tuesday, May 5th. Pictured are part of the group: (L-R) Patricia Nicholas, Mrs.

Carl M. Clark, welfare chairman, Judy Mashita, Dr. Iwao Ishino, Michigan State Advisory group, Janet Johnson, Dennis Smith and Colonel John F. Wolfe, USARYIS staff judge advocate. Dr. Ishino and Col. Wolfe are serving as judges for the committee.

(MORNING STAR PHOTO)



↑ **ミシガン州立大学教授団の新団長**
 琉大校舎の見えるリュウタン池の前に立つ石野巖博士。同氏は1963年7月に社会学及び人類学の教授としてミシガン州立大学教授団に派遣され、今度新団長に就任した。



← **美術の祭典**

キヤラウエイ高等弁務官夫妻は、壺屋小学校で行なわれた沖繩タイムス主催の「沖展」を訪問し、絵画、漆器、陶器、手芸品を「ごらん」になった。

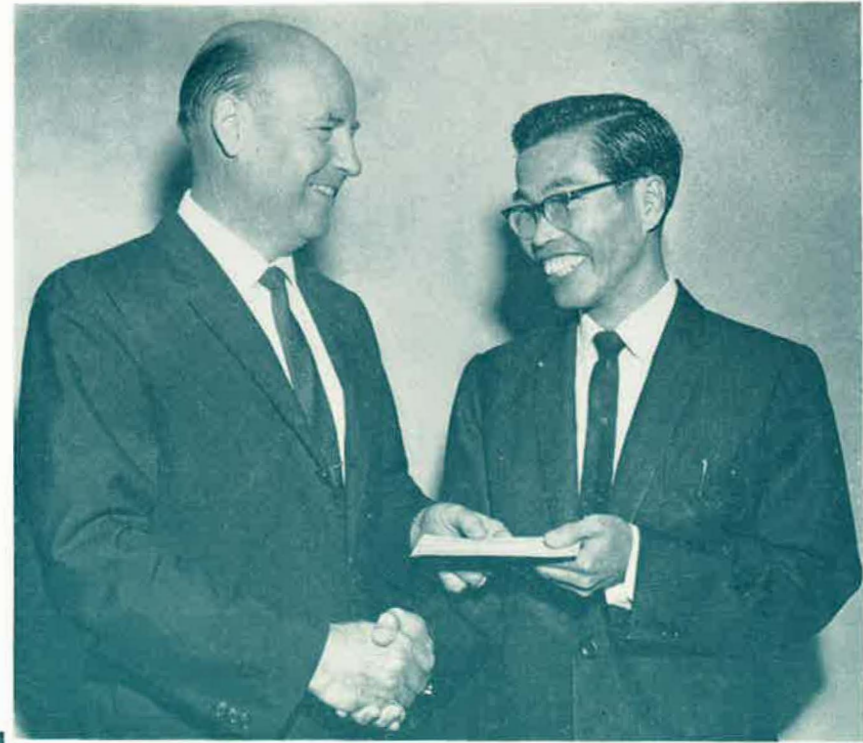


→ **金門クラブで講演**

ジェラルド・ワーナー民政官(左)は米国留学帰島者で結成された金門クラブで「年々伸びて行く世界貿易及び観光事業の面で、高度の英語力を身につけた人の需要は満たせないくらいだ」と強調した。名城副会長が民政官を迎え、司会をつとめた。



琉球銀行の新本店 琉銀は近く那覇市繁華街に100万ドルで完全冷暖房の本店を建築することになっている。これは琉球ではじめて工事されるプレストレスト及び鉄筋コンクリート建てである。この工事は在沖米国陸軍工兵隊のヘンリー C・シユライダー大佐の監督のもとに行なわれる。



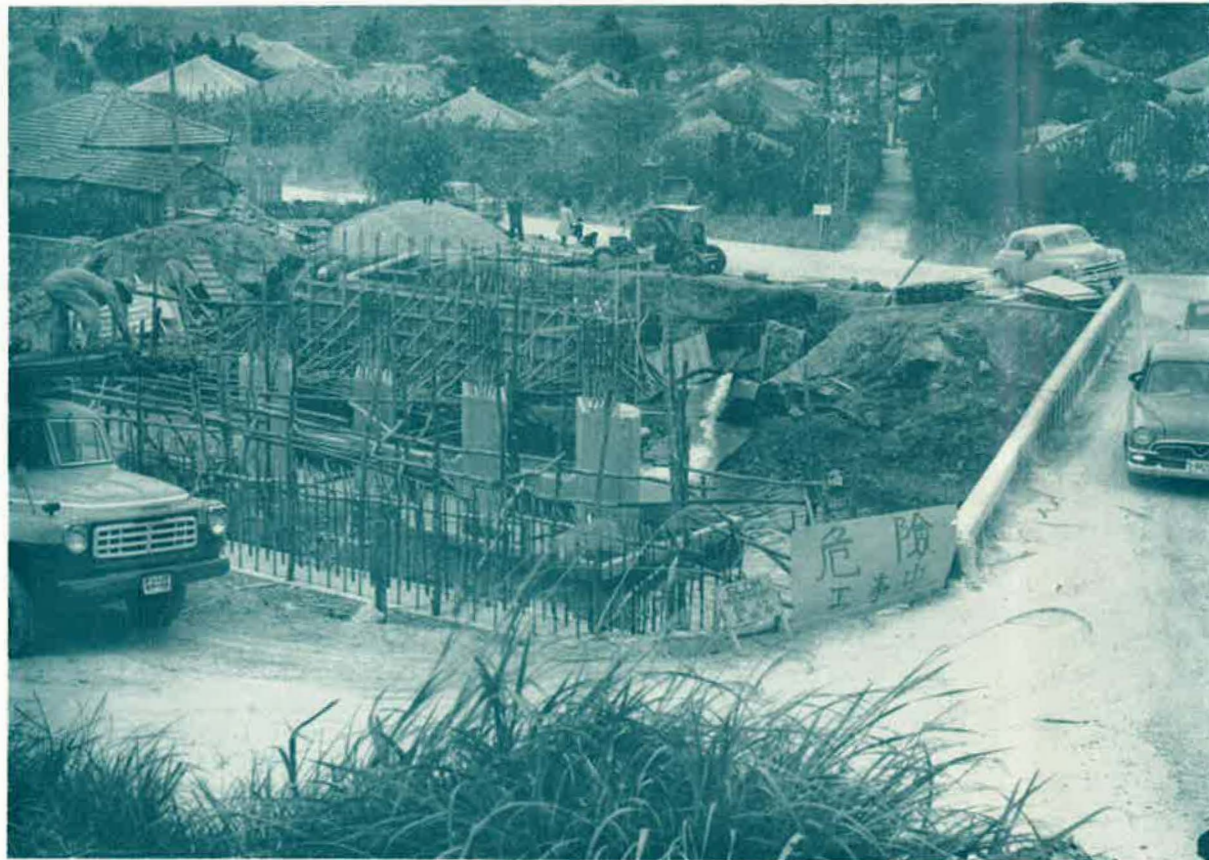
← **民政府婦人クラブ奨学金**
獲得者 沖繩大学一年の比嘉長俊氏(高等弁務官府司法部勤務)に民政府婦人クラブから二百ドルの奨学金が贈られた。民政府婦人クラブに代つて、小切手を手渡すラツセルL・ステイブンス判事。

← **米人学校で植樹**
 琉球政府大田政作行席主席が一号線沿いのマシー米人学校の生徒代表に二百本のシユロ、想思樹、木麻黄などを贈つた。その中のシユロ一本を植樹する生徒たち。クリス・アンダーソン、ブレンダ・ニューマン、リチャード・西田君。



→ **奨学金獲得者** 糸満高校の垣花マサオ君は那覇航空隊第十六戦闘要撃隊から琉球大四年の奨学金八百ドルを授与された。写真はドナルドB・グレッグ大尉から贈られた航空兵キヤプをかぶっているところ。

写真ニュース No. 114 (FY-64-42) 1964年4月17日
高等弁務官府



→ **名護以北に工事中の橋**
 名護から北へ凡そ六キロの地点にある羽地村仲尾次に新しい橋が一号線改修の一環として、米国資金で工事中である。この橋は危険な古い橋(右)にかわるもので、急カーブの地点の羽地川にかけられる。

UNITED STATES CIVIL ADMINISTRATION OF THE RYUKYU ISLANDS
OFFICE OF THE HIGH COMMISSIONER
Naha, Okinawa
17 April 1964

Office of Public Affairs

POSTER: Photo News Poster No. 114
CONTENTS: Current Events in the Ryukyu Islands
LANGUAGE: Japanese
DISTRIBUTION: 1,000 copies, Ryukyu-wide

* * *

1. ART FESTIVAL VISITORS. High Commissioner Paul W. Caraway and Mrs. Caraway visited "Okiten," annual Ryukyuan art exhibition at Tsuboya Elementary School to view lacquerware, paintings, handicraft, and pottery. The Okinawa Times sponsored the exhibit.

2. GOLDEN GATE CLUB SPEAKER. Civil Administrator Gerald Warner, left, who addressed the Golden Gate Club of returned Ryukyuan students to U. S. universities and colleges under a Department of Army scholarship program, emphasized the "unfilled need for employees with a high level of competency in the English language, required by constantly increasing Ryukyuan participation in world trade and the expanding tourist industry." Mr. Shimei Nashiro, vice-president of the Club, greeted him and presided.

3. NEW CHIEF OF MICHIGAN STATE UNIVERSITY GROUP. Dr. Iwao Ishino, new Chief of the Michigan State University Group at the University of the Ryukyus, stands in front of Ryutan Pond beyond which loom the imposing University buildings. Dr. Ishino joined MSUG in July 1963 as professor of sociology and anthropology.

4. NEW OFFICE BUILDING FOR BANK OF THE RYUKYUS. This fully air-conditioned \$1,000,000 office building for the Bank of the Ryukyus will be constructed in downtown Naha. It is the first completely prestressed, reinforced concrete structure to be built in the Ryukyu Islands. The contracting agency is the U. S. Army Engineer District, Okinawa, under Col. Henry C. Schrader, District Engineer.

5. TREE-PLANTING AT LOCAL AMERICAN SCHOOL. Chief Executive Seisaku Ota presents a palm seedling, one of some 200 palms, acacias and Australian pines, to honor students of the Mercy Intermediate (American Dependents) School on Highway No. 1. Students are Chris Anderson, Brenda Newman, and Richard Nishida.

6. USCAR WOMEN'S CLUB SCHOLARSHIP WINNER. Nagatoshi Higa, freshman at Okinawa University and clerk of the court, Judicial Department, Office of the High Commissioner, was presented a one-year \$200 scholarship by Judge Russell L. Stevens, Judicial Department Director, on behalf of the USCAR Women's Club.

7. NEW BRIDGE UNDER CONSTRUCTION NORTH OF NAGO. Bridge at Nakaoshi, Hanejison, approximately six kilometers north of Nago, is being constructed with U. S. funds as part of Highway No. 1 improvement. Bridge will replace dangerous, outdated bridge (right) which crosses Hanejigawa (Haneji River) at sharp angle.

(over)

8. SCHOLARSHIP WINNER. Masao Kakinohama, 19, of Itoman High School, was selected by school officials and the 16th Fighter Interceptor Squadron, Naha Air Base, for an \$800 four-year scholarship at the University of the Ryukyus. He tries on an airman's cap presented by Capt. Donald B. Gregg, project officer in the Squadron's quest for a suitable recipient of the scholarship.

*

*

*

MSU Names New Chief In Okinawa

Dr. Iwao Ishino, professor of sociology and anthropology at Michigan State University, has been named the new chief of MSU's advisory group at the University of the Ryukyus in Okinawa.

His assignment was approved by the MSU Board of Trustees, with an effective date of March 26, 1964. He will serve as chief of party until June 1965.

Dr. Ishino succeeds Thomas H. King, assistant registrar at Michigan State, who returned to the East Lansing campus in March.

Michigan State University has provided advisory and technical assistance to the Okinawan institution under a contract with the U.S. Army since 1951.

The present agreement involves the services of four full-time faculty and staff members from Michigan State and five short term consultants.

The new chief of the MSU-Ryukyus group joined the Okinawan university in July, 1963, as a professor of sociology and anthropology.

Dr. Ishino has been a member of the MSU faculty since 1956. In 1958 he was a Fulbright professor in cultural anthropology at the University of Tokyo.

His published works include the book "Kokoku-no-Shakaigaku" (Sociology of Advertising); and "Paternalism in the Japanese Economy" and "Social Problems," of which he was co-author.



ORANGE ● GRAPE ● CLUB SODA
Authorized Bottler of Coca-Cola
OKINAWA SOFT DRINKS KAISHA

Good Mornings Begin with The

Morning Star

© K I N A W A

MEN'S SHIRTS
by *Enro*
Short Sleeves, in
65% Dacron-35% Cotton.
Perfect for business
or dress. Now at
ROGER'S
first in fashion



NUMBERS 099 (899) 2214-2215-2216-2371-2372

FRIDAY, JULY 12, 1963

STAR PHONE NUMBERS 099 (899) 2214-2215-2216-2371-2372

PRICE 10¢

4-Year Heads fo

POLITICAL AFFILIATIONS SCRUTINIZED

GRI's Bank Probe Continues

an effort to crackdown on
ed financing of
al parties by public
cial institutions, the Gov-
nt of Ryukyus is expect-
soon make it illegal for
anks and insurance corpora-
ions to give political donations,
government sources said yes-
terday.

periods—provided the “root of
emerged in the form of graft
and corruption in several local
banks.

Political observers predicted
that the new regulation would
prove especially damaging to
the conservative and pro-

conjunction with GRI police,
are continuing their series of
crackdowns on alleged cor-
ruption and graft within local
Ryukyuan banks.

The latest raid was last Wed-
nesday when a police special
investigation squad in Naha
moved into the Okinawa Sogo

Noted Educator To Teach Here

Dr. Iwao Ishino of Michigan
State university has joined the
staff at the University of the
Ryukyus as professor of socio-
logy and anthropology.

Dr. Ishino has had a long term
interest in the study of human
communities. In 1942, he perfor-
med a community study of a
relocation camp in Poston, Ariz.,
and in 1949-1951 he conducted
rural community studies. In
1958-1959, when he was in Japan
under a Fulbright grant, he
surveyed 13 representative rural
communities to determine social
and cultural changes which had

individual the evil” which
taken place during a 10-year
period.

He was assistant professor of
sociology and anthropology at
Ohio State university from 1951
to 1956 and professor of socio-
logy and anthropology at MSU
from 1956 to 1963.

In 1968, he was a Fulbright
professor in cultural anthropo-
logy at the University of Tokyo,
Japan.

He was educated at San Diego
State college and Harvard uni-
versity where he was awarded
his doctor of philosophy degree
in 1954.

Bombing Continues In Manila

MANILA, July 11 (UPI) —
Thirty-seven strikers were in-
jured in a series of explosions
that rocked the strike-bound
Manila south harbor Wednes-
day, police reported.

Five of the injured were said

Visits Chamber



Board Accepts Gifts, Grants Of \$905 Million

Gifts and grants totaling \$905,029.78 were accepted Friday by the Board of Trustees at its monthly meeting held at the MSU Kellogg Biological Station at Gull Lake.

Two grants totaling \$56,000 came from the Packaging Foundation, Inc., of East Lansing. It represents money donated by numerous industries to support packaging education at MSU. The funds will go toward construction of the new School of Packaging Building and for salaries and expenses in the office of A.C. Beardsell, the foundation's executive director who is stationed here.

A \$52,300 grant from the National Science Foundation has been awarded to Michael J. Harrison and Truman O. Woodruff, ***

Director Of Nursing To Leave Post

Florence C. Kempf, nationally prominent nursing educator and director of the School of Nursing, will retire September 1.

Miss Kempf has directed the nursing program since its beginning in October 1950.

Her retirement was approved Friday by the MSU Board of Trustees, meeting at the MSU Kellogg Biological Station at Gull Lake. Her successor is to be named this summer.

Before joining the MSU faculty, she was assistant director of nursing at University Hospitals, Cleveland, Ohio, 1947-50; associate director of the Hartford (Conn.) Hospital School of Nursing; and assistant principal of the Massachusetts General Hospital School of Nursing; and assistant principal of the Massachusetts General Hospital School of Nursing, Boston, 1936-45.

She has also held positions with the nursing schools at Western Reserve University, Vanderbilt University and the University of Michigan.

She has served as chairman of the Michigan Board of Nursing and as president of the Michigan

in the department of physics and astronomy. They will study the theory of solid-state plasmas.

Another NSF grant, \$52,220 will be used for instruction and equipment in seven undergraduate science programs. The programs and their directors are: forestry, Donald P. White; science

and mathematics teaching center, John M. Mason; chemistry, A.I. Popov; zoology, Charles S. Thornton; geography, Lawrence M. Sommers; psychology, Paul Bakan; and physiology, R.F. Johnston.

The National Institute of Mental Health of Bethesda, Md.,

awarded \$51,644 to support graduate work of 12 students planning careers as psychiatric social

M. McInnis, Kreke Named Top Seniors

Seniors of the Week Mary McInnis and Henning Kreke share an interest in learning about people in all parts of the world.

A Spanish major from Cedar Springs with a 3.7 point average, Miss McInnis, has spent two summers in Mexico. She spent last summer studying in Switzerland and then touring the rest of Europe for three weeks.

Kreke is an economics major from Colon, Germany. He has been studying in the United States for the past four and a half years. He was vice-president and then president of the Campus United Nations.

Miss McInnis was vice-president and president of her dorm, a member of President's Council and WIC, for which she was co-chairman of Inter-Resident Sing. She was president of Mortar Board, historian of Tower Guard and a member of Alpha Lambda Delta and Circle Honorary.

Kreke worked on the AUSG Elections Review Board. With his 3.6 point average he is in Honors College, Excalibur, Blue Key and Omicron Delta Kappa honoraries. He also received an Outstanding Junior Award.

Both Miss McInnis and Kreke plan to earn masters degrees at Harvard University.



WILSON PICKETS—Administration heads of Wilson Hall were criticized by picketing students this weekend because of present rules under which the dormitory is run.

Photo by Bob Barit

YD's Choose Tom Gardyko

Tom Gardyko, Saginaw sophomore, has been elected chairman of the campus Young Democrats.

Elected as State Central delegates were Gerry Sell, Bethesda, Md., freshman; Joe, Kalo, Flint sophomore; Pete White, Bay City freshman; and Noreen Stanton, Birch Run sophomore.

Other officers for the coming

Spring Want-Ad Special.



STATE NEWS WANT-ADS Ring Results . . .

Turn those old golf clubs, water skis, tennis rackets, or any other articles you aren't using anymore into **CASH . . .**

workers. Max Bruck is director of the program.

A \$51,615 grant from the National Institutes of Health (NIH) was accepted to support a study of the terminal stages in the biosynthesis of hemoglobin. A.J. Morris, assistant professor of biochemistry, is directing the research, which includes examination of the assembly of the hemoglobin molecule from its constituent parts.

The National Aeronautics and Space Administration granted \$39,986 for a study of NASA-university relations. Director of the study is Donald J. Montgomery, professor of physics and astronomy, who will be stationed in Washington, D.C., for a year beginning September 1.

Purpose of his investigation is to recommend areas and methods of support by NASA-university relations. Director of the study is Donald J. Montgomery, professor of physics and astronomy, who will be stationed in Washington, D.C., for a year beginning September 1.

R. Neal Band, assistant professor of zoology, will continue study of the means by which parasitic amoebae might have evolved from free-living forms. A \$39,361 grant from the National Institute of Allergy and Infectious Diseases will support the research. He is studying how a living cell is able to lose its respiratory machinery and still

survive, and the surface interactions of living cells in close association.

An Atomic Energy Commission grant of \$39,000 will be used by S.H. Wittwer and M.J. Bukovac of the horticulture department to continue research on absorp-

tion and redistribution of various minerals in plants.

Another NIH grant, \$36,660, will support research of the messenger RNH (ribonucleic acid) from bacillus subtilis. John A. Boezi, assistant professor of biochemistry, is the chief investigator. ***

The board approved a memorandum of agreement with Earl Enterprises, Inc., of Hillsdale to provide \$36,000 for a study of artificial insemination of swine. Jacob A. Hoefler will direct the project

A \$31,300 grant was accepted from the American Federation of Musicians to support the annual Congress of Strings at MSU this summer. The grant will be utilized by Wilson B. Paul, director of the Lecture-Concert Series.

A gift of \$25,037.50 was presented by MSU's Class of 1914. The funds, donated by 136 members of the class, will be used to provide reception room and office furnishings for the department of alumni relations and the Development Fund when both departments move to the Union. Also accepted was \$13,692 in scholarship grants, including \$263 for Oakland University.

Prof Heads Advisers At Okinawa School

Iwao Ishino, professor of sociology and anthropology, has been named the new chief of MSU's advisory group at the University of the Ryukyus in Okinawa.

His assignment was approved by the Board of Trustees, with an effective date of March 26, 1964. He will serve as chief of party until June 1965.

Ishino succeeds Thomas H. King, assistant registrar, who returned to campus in March.

MSU has provided advisory and technical assistance to the Okinawan institution under a contract with the U.S. Army since 1951.

The present agreement involves the services of four full time faculty and staff members from Michigan State and five short term consultants.

The new chief of the MSU-

CALENDAR of EVENTS

WEEK OF MAY 25

Monday: Watch for local tournaments

Tuesday: Family Night. Anyone under 12, may play the first round at 1/2 price, additional rounds free when accompanied by a parent. (parent pays full price)

Wednesday: Watch for league play to begin

Thursday: Penny Night. Anyone who presents a penny dated 1955 will be permitted to play one round at 1/2 price.

Friday: Date Night. Your date plays first round free and additional rounds at 1/2 price.



ARNOLD PALMER PUTTING COURSE
"CHAMPION OF ALL MINIATURE GOLF COURSES"
700 MILLER RD. AT S. CEDAR

Ltd. by Arnold Palmer Putting Course and Driving Range Cos. Atlantic City, N.J.

PORTABLE TYPEWRITERS ELECTRIC & MANUAL

- OVERHAULING or
- CHEMICAL CLEANING
- REPAIR and ADJUSTMENT

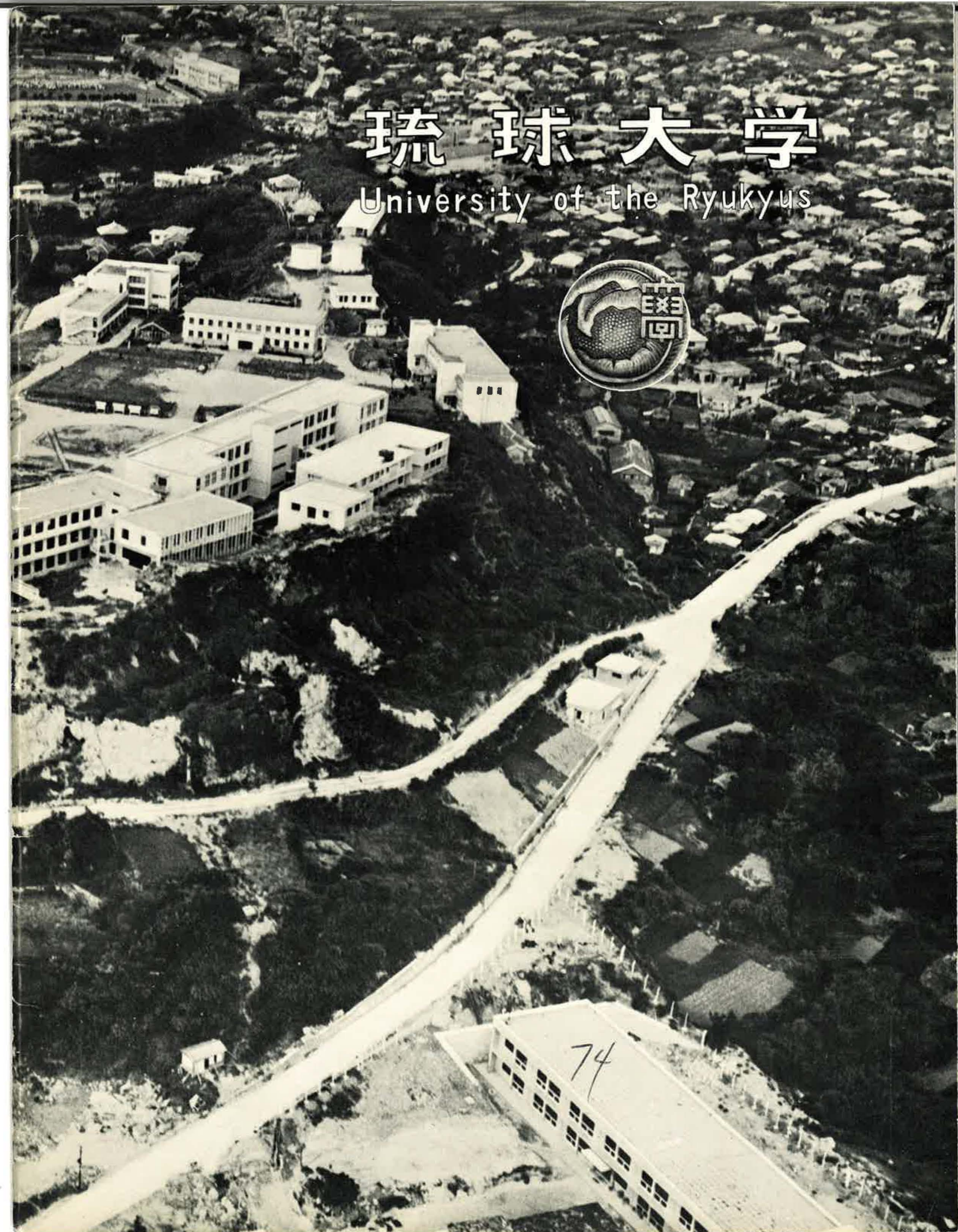


Very Reasonable!
24 Hour Service
ALL JOBS GUARANTEED
ask for Louis May

COMPLETE WORKSHOP IN BASEMENT OF

琉球大学

University of the Ryukyus



74



初代学長 志喜屋孝信 博士
THE LATE DR. KOSHIN SHIKIYA
First President, 1950~1952



二代目学長 胡屋朝賞氏
MR. CHOSHO GOYA
Second President, 1952~1955

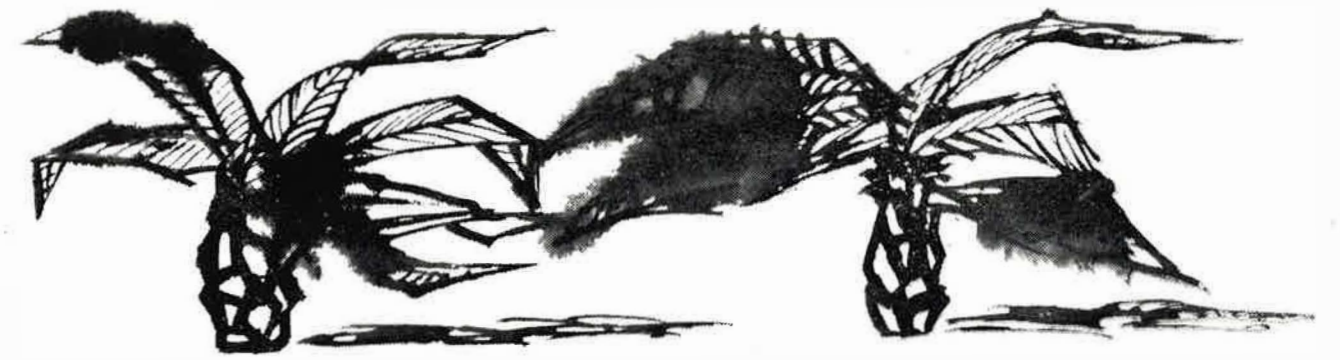


琉大逍遙歌

一、ふるき都に さすらいて
世紀のあとを 尋ねれば
あゝ青春の 血はさえて
羽ばたく希望 力あり

二、友の情に 酔いふして
南十字を 語らえば
ふる星影に 悠久の
真理の光 萌むなり

三、われら若人 純情に
巷の恋は うそぶけど
みよ東雲に 翔りゆく
且の生命 息吹あり



目次

誕生と発展 3
大学の目的 5
第二次施設拡充計画 7
大学の運営 7
大学理事会 9
ミシガン派遣教授団 9
琉球大学予算 11
琉球大学ファウンデーション 12
学部・附属図書館 13
文理学部 13
教育学部 17
農家政工学部 19
志喜屋記念図書館 21
教授・研究・普及 23
招聘教授 25
学会出席 25
普及活動 25
大学事務局 29
学生生活 30
研究雑誌 30
学寮生活 32
奨学金 34
^ yearly by the University of 34

TABLE OF CONTENTS

HISTORY
Birth P 3
Growth 4
Construction Program 4
ADMINISTRATION
Organization 8
Michigan State University Advisory Group 10
University of the Ryukyus Foundation 10
ACADEMIC ORGANIZATION
AND ACTIVITIES
Division of Arts and science 14
Division of Education 16
Division of Agriculture, Home Economics
and Engineering 18
Cooperative Training 18
Shikiya Memorial Library 20
FACULTY, RESEARCH, AND EXTENSION
Faculty 22
Research 22
Extension Services 24
BUSINESS ADMINISTRATION OFFICE
Business Administration Office 29
STUDENT LIFE
Club Activities 31
Field Work 31
Living Accommodations 33
Health Center 33
Scholarships,
and Loans 33
Graduates, and Their Occupations 35

UNIVERSITY
No.2

December 2, 1960

Edited and published
by the Ryukyus.

Printed by Jyono Printing Co., Ltd.

「琉球大学」は広く内外の人々に大学を紹介する目的の出版物です。

編集兼発行人
印刷所
発行所
発行日

真栄城朝潤
株式会社城野印刷所
琉球大学
1960年12月2日

Kumamoto Japan



現学長 安里源秀博士

DR. GENSHU ASATO
President of the University



誕生と発展

1950年4月25日、第二次世界大戦ですっかり破壊された首里城址に、九棟の木造と一棟の石造瓦屋根の建物が立つた。

首里城址は、琉球の首都那覇市を眼下に見下す首里の高台に位置し、かつてここで琉球歴代の王が政治を行い文化政治の中心をなした由緒ある場所である。

ここに、全琉か
び事務職員が集った。この人たちの胸の中には、共通の
たくましい希望が燃えていた。

BIRTH

The University of the Ryukyus came into being in May, 1950, replacing Shuri Castle, which had stood until 1945 as the symbol of the flourishing culture of the Ryukyu Islands. The campus, situated on the height of Shuri, command a grand view of the city of Naha and its vicinity. As was true of the Castle in the past, this University has become the cultural center of the Ryukyu Islands, and it is making every effort to serve the people and to meet the needs of a constantly changing society.

Our University is the realization of the long-cherished dream and desire of the Ryukyuan people for

「私達は本学が言わば文化的原動力となつて、そこから新しい力と新しい光が琉球諸

行く様にと、大学の全部科を高度に実用的なものにならしめたい。同時に又私達は、首里を昔の様に琉球文化の中心地としたい。そうして新旧文化を渾一融合すれば、それは民族の誇りと喜びとなり、この諸島のすべての家庭に福祉を齎すものとなるであろう。」本学創立の趣旨にはこのように謳われている。

higher education. With the hearty and precious assistance of American people in and outside the Ryukyu Islands, we are finally seeing our dream come true.

The ground work for the establishment of the University started in 1948. The site of Shuri Castle was selected as the site of the University by an inspection group composed of Brig. Gen. John Weckerling, Chief of the Ryukyus Section, GHQ-SCAP, Mr. Arthur E. Meel, Director of Education, Military Government, and Mr. Atsuo Yamashiro, Director of Education, Okinawa Civil Government.

Construction began in mid-1949, and by the end of April, 1950, a ferro-built administration building and nine wooden building were ready for use.

首里の高台に位置する琉大は琉球の文化、
経済、社会の発展に多大の寄与をなしてい
る。

Located on the high hills of Shuri, the
University plays an important role in
the development of the Ryukyus.





創立当初の琉球大学

University of the Ryukyus
in 1950

The University was formally opened on the 22nd of May, 1950. Mr. Genshu Asato, then Chief of the Adult Education Section, Okinawa Civil Government, was appointed acting president by Brig. Gen. Sherman, Deputy Governor of the Ryukyus. There was a faculty of 44 and a student body of 562 enrolled in six departments: English, Education, Social Science, Natural Science, Agriculture, and Applied Arts.

In November, 1950, Mr. Koshin Shikiya, former Governor of Okinawa, was inaugurated as the first president of the University. Civil Administration Ordinance No. 30 was issued in January, 1951, prescribing basic rules governing the operation of the University, and the University began its mission of academic and vocational training of the students and of providing many opportunities for educational activities of the public.

GROWTH

In the short span of ten years of its existence, the University has steadily grown not only in size but also in scope.

The current enrollment of students has reached 2,233 and there are now 365 members on the faculty. The University has produced 1951 graduates in the last ten years.

The number of individuals acquiring higher education and cultural training through the services of the University Extension section increased from 682

in 1951 to 64,585 in 1959, making the total number of those benefiting from these services 76,232 in ten years.

The growth of the University is also evidenced by the increase of its operational budget. The budget for 1953, when the University was given control of its own financial management, was \$ 259,877. This has now quadrupled, amounting to \$ 1,030,426 for the fiscal year 1961.

CONSTRUCTION PROGRAM

A Five-year Construction Plan has been developed and is being executed. This program has been necessitated by the need for concrete buildings to replace the tile-roofed buildings, which had been seriously damaged by yearly typhoons, and also by the need for expansion of the physical facilities to accommodate increased enrollment.

The temporary wooden buildings were removed to make space for the permanent Agriculture, Vocational Education, Education and Classroom buildings, which

Prominent among the buildings on the 10-acre campus of the University is the Shikiya Memorial Library, a modern five-story concrete building which stands at the side of the main entrance to the campus. This building, erected in honor of the late Dr. Shikiya, replaced the old library which was a flat wooden structure accommodating only about a hundred people.



構内緑化も着々進む

Planting Program is also steadily
progressing on the campus

こうして、戦災で亡びた琉球文化の灰の中から、長年にわたる琉球の人々の夢が実を結んで、最初のそして唯一の大学—琉球大学—がたからかに産声をあげた。1950年5月22日である。大学の生みの親たちの中でも特に力をつくしたのが、当時連合軍最高司令部琉球局長ジョン・ウエツカリング准将、琉球軍政府情報教育部長ジョン・スチュアート中佐、その後任のアーサー・E・ミード氏ならびに沖縄民政府教育部長山城篤男氏などである。手本となる他の大学もなく、大学の基となる伝統もない生れたての琉大を育てあげるため、現学長安里源秀氏が、

1950年2月、琉球軍政府副長官シャーマン准将から琉球大学学長代理に任命された。以来本学の育成には並々ならぬ苦心と努力があつた。

やがて、沖縄民政府知事志喜屋孝信博士が初代学長として正式に就任し、(1950年11月4日) ついで51年1月には、民政府布令30号によって琉球大学基本法が制定され、大学の歩みも軌道にのつた。

大学の目的

翌52年2月には、民政府布令66号が出て、大学の目的をつぎのように明らかにした。

〔琉球大学は、琉球の人々に対し一般的及び専門的知識並に、教育を普及し、その経済、文化の発展を促進し、民主主義諸国民を理解し、その慣習を学び、自由即ち言論・集会・請願・信仰及び出版の自由を得ることを助長せしめるのを目的とする。〕

1952年7月、学長の任は志喜屋孝信博士から胡屋朝賢氏に引継がれ、53年3月には、琉球大学第一回の卒業生として26名、修了生74名が学内外の期待を受けて門出した。琉球大学の基礎は固まつた。

10年前、戦後の廢墟の中から貧しい施設とわずかな人員とで芽を出した琉大は、今日、学生数2,233名、教授及び事務職員数365名、6つしかなかった部科—農業・応用学芸・教育・英語・理科・社会—が農家政工・文理・教育の三学部の下に26の科をもつまでになつた。

守礼門より琉大を望む View of a part of the University from "Shureino mon"





本学が誇る志喜屋記念図書館
Shikiya Memorial Library, of
which the University is proud

The Library was completed in the middle of 1955, and in December of the same year the dedication ceremony was held in the presence of Gen. Lemnitzer, Governor of the Ryukyu Islands, Gen. Moore, Deputy Governor, and many government officials and educational leaders.

In 1957, the remodeling of the old administration Building and the construction of the Education Building were completed. In 1958, the Health Center Building was constructed for medical care of the students. And in July, 1960 the dedication ceremony of the two-storied Women's Dormitory was held.



晴れの卒業式。思い出と希望を胸に秘めて……。
Commencement Exercise with reminiscences
and hopes in each graduate.

Further to be implemented in this Five-year Plan is the construction of such buildings as Gymnasium-Auditorium, Engineering Building, Home Economics Building, Student Union, and additions to the Science Building and Agriculture Building.

If the past achievement is an indication of the future, we can expect that the University of the Ryukyus will soon take its place among the leading universities in the Far East.



難問にいどむ受験者たち
Candidates struggling with
the entrance examination

In our programs for the development of the University, we have received much assistance from such agencies or institutions as USCAR, GRI, Michigan State University, The Rockefeller Foundation, The Asia Foundation, Japanese universities, and many other educational organizations and people in and outside the Ryukyus.

施設面での発展は一段とめざましく、台風のために修理を要した木造瓦屋根の教室が次から次へと鉄筋コンクリートの永久建築にかえられた。主なものを挙げると初代学長を記念して建てられた五階建の志喜屋記念図書館、同じく五階建の理系ビル、三階建の農学ビル、工芸ビル、教育ビル、文系ビル、男子寮、女子寮、ヘルスセンターなどがある。これらの近代建築が校庭も狭しと首里の高台にそびえ立つさまは、学問の殿堂にふさわしい偉観である。

第二次施設拡充計画

これに加えて大学の発展に一大エポックをしるすものとして、琉球大学施設拡充第二次計画がある。これは年々増加する学生や教職員の要求をみたし、日進月歩の学問の研究に十分の便益を図るため実施されているが、

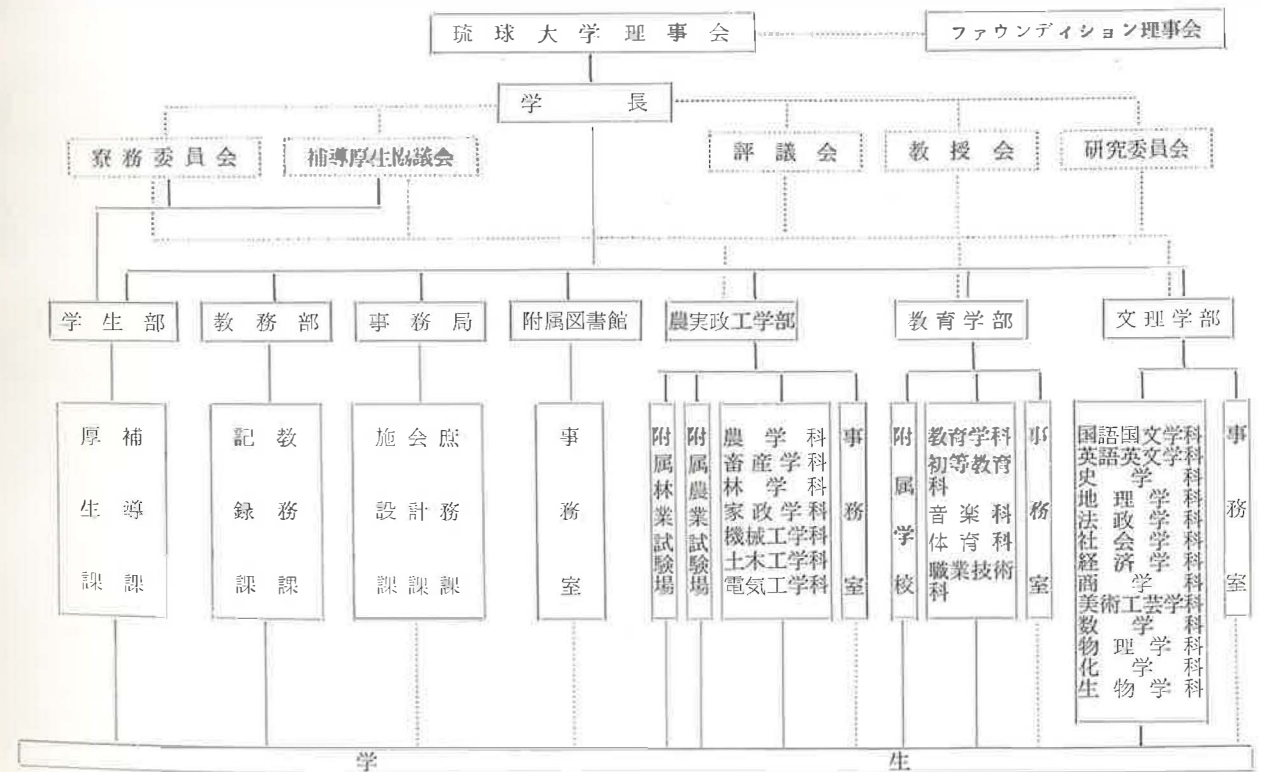
新に次の諸施設の建築がふくまれている。体育館・小・中・高校の実験学校・工学教室・農学ビル・理学ビル・農場施設・学生・職員センター・工場施設・林学ビル・家政学ビルなど。

現代の大学の機能は、十分なる施設なくしては果されない。これらの建設が完成すれば一年一年と充実強化されていく大学の内容と相俟つて、琉球大学は最も完備した設備を具え、独特の内容をもつすばらしい大学の一つとなるでしょう。

大学の運営

琉球の経済・文化の発展を促進し、人々の福祉を増そうと日夜心をくだしている本学は、どのように運営されているだろうか。

琉球大学機構図



理事長
仲井間宗一
Soichi Nakaima
Chairman



**ADMINISTRATION
ORGANIZATION**

Civil Administration Ordinance No. 30 issued in January, 1951, was rescinded and replaced by CA Ordinance No. 66 of February, 1952. This new ordinance set forth the objective of the University and defined its operation more in detail than the former ordinance. Under this new Ordinance, the University was made an agency of the Government of the Ryukyu Islands, but the responsibility for the operation and for the control of the University in all its phases is vested in the Board of Directors.

The Board consists of seven members, Ryukyuan-born men and women, of whom six are appointed by the Chief Executive, GRI (Government of the Ryukyu Islands), with the approval of the Civil Administrator, USCAR (United States Civil Administration of the Ryukyus), in addition to the Director of Education, GRI, who is a member ex-officio. One or two of the six appointed members must be members of the Central Board of Education, GRI, and each of the three major insular areas — Okinawa, Miyako, and Yaeyama — must be represented on the Board.

The present Board consists of one member of the Central Board of Education, one representative each from Miyako and Yaeyama, two from Okinawa, and the Director as the ex-officio member.

The Board of Director, subject to approval of the Civil administrator, has control over the policies, management, finances, personnel and all other matters that pertain to the University.

The President, appointed by the Board for a term of three years, is its executive secretary and has charge of the University's administration. Under him stands the Administrative Council, which consists of the Business Manager, Deans of three academic divisions, Chief Librarian, Registrar, Dean of students and two representatives from each of the three academic divisions' faculty.

The 1961 budget of the University is \$1,030,426 — of which \$712,570 is a direct appropriation from GRI, and \$251,100 is a grant-in-aid from USCAR. The balance is income from other sources such as tuition fees.

理事
比嘉松栄
Shoei Higa
Vice-chairman



理事
小波蔵政光
Seiko Kohagura
Ex-officio



理事
佐久本副矩
Shiku Sakumoto



理事
宮城久隆
Hisataka Miyagi



理事
福嶺紀仁
Kijin Hukumine



理事
宮城信勇
Shinyu Miyagi



幹事
安里源秀
Genshu Asato
Executive
Secretary



大学理事会

琉大のあらゆる面における運営と管理の責任は、琉球
大学理事会が



理事会風景
Board of Regents Meeting

て貴重な助言を与えている。
ン州立大学と琉大が緊密な関係をもつようにな
は本学の創立当時、米陸軍省が誕生間もない
展育成に手を貸してくれる適当な大学を全米の
から選んでほしいと米教育評議会に依頼しミ
立大学が選ばれたもの。

シガン州立大学が選考された理由は、琉大が日
どに見られるような従来の大学と趣を異にし、
究に加えて一般の人々に学内での研究成果を普
普及活動」に重点をおく新しい大学の理念をと
いるところからきている。というのはミシガン
は、前述の新しい理念を実施した米国での最初
一つだからである。

派遣教授団の目的とすることは、新しく教育計画
それを実施拡大しつつある諸地域で教育的なら
的方法について助言指導することで、ミシガン
では沖縄の外に、ヴェトナム・パキスタン・南
多くの大学と提携して、それぞれの国の教育の発
に貸している。

ン教授団が、最初に琉大に派遣されてきたのは

理事長
仲井 閣 宗 一
Soichi Nakaima
Chairman



ADMINISTRATION ORGANIZATION

Civil Administration Ordinance No. 30 issued in January, 1951, was rescinded and replaced by CA Ordinance No. 66 of February, 1952. This new ordinance set forth the objective of the University and defined its operation more in detail than the former ordinance. Under this new Ordinance, the University was made an agency of the Government of the Ryukyu Islands, but the responsibility for the operation and for the control of the University in all its phases is vested in the Board of Directors.

The Board consists of seven members, Ryukyuan-born men and women, of whom six are appointed by the Chief Executive, GRI (Government of the Ryukyu Islands), with the approval of the Civil Administrator, USCAR (United States Civil Administration of the Ryukyus), in addition to the Director of Education, GRI, who is a member ex-officio. One or two of the six appointed members must be members of the Central Board of Education, GRI, and each of the three major insular areas — Okinawa, Miyako, and Yaeyama — must be represented on the Board.

The present Board consists of one member of the Central Board of Education, one representative each from Miyako and Yaeyama, two from Okinawa, and the Director as the ex-officio member.

The Board of Director, subject to approval of the Civil administrator, has control over the policies, management, finances, personnel and all other matters that pertain to the University.

The President, appointed by the Board for a term of three years, is its executive secretary and has charge of the University's administration. Under him stands the Administrative Council, which consists of the Business Manager, Deans of three academic divisions, Chief Librarian, Registrar, Dean of students and two representatives from each of the three academic divisions' faculty.

The 1961 budget of the University is \$1,030,426 — of which \$712,570 is a direct appropriation from GRI, and \$251,100 is a grant-in-aid from USCAR. The balance is income from other sources such as tuition fees.

理事
比 嘉 松 栄
Shoei Higa
Vice-chairman



理事
小 波 蔵 政 光
Seiko Kohagura
Ex-officio



理事
佐 久 本 嗣 矩
Shiku Sakumoto



理事
宮 城 久 隆
Hisataka Miyagi



理事
福 嶺 紀 仁
Kijin Hukumine



理事
宮 城 信 勇
Shinyu Miyagi



幹 事
安 里 源 秀
Genshu Asato
Executive
Secretary



大学理事会

琉大のあらゆる面における運営と管理の責任は、琉球人の男女七名によつて構成されている琉球大学理事会が負っている。理事会は法律に別段の定めある場合を除き琉球列島米国民政府民政官の許可を得て、その任務を遂行する。

理事は、職責上の理事として文教局長、他の六名は民政官の認可を得て行政主席が任命するが、その中には、沖繩、宮古、八重山からの代表と中央教育委員会から二名または一名の理事が含まれる。

これらの理事は、大学の政策・運営・財政・人事その他本学に関する一切のものに管理権を有し、大学ひいては琉球の人々に最大の利益をもたらすよう、大学のあらゆる資産や財源を運用している。

理事会は、琉大の学長を任命し、学長は理事会で決められた政策方針にもとづいて、学内を運営する権限をもっている。

学内には、本学の重要な事項を審議し、いろいろと学長の顧問に応じたり進言したりする評議会があり、これは各部署局長、及び各学部から選ばれた二名宛の代表によつて構成されている。

また各学部には教授会が置かれ教授その他学部の組織運営に関する重要なことがらを審議し、学内運営が円滑に行われるよう力をつくすと共に、社会に奉仕する大学としての機能が十分に果せるよう意を注いでいる。

ミシガン教授団

本学には、米国ミシガン州立大学から派遣された五名の米人教授がいる。この人達は、それぞれ職業教育・カウンセリング・図書館学・英語・土木工学の専門家であり、各教科は勿論、本学の建設、運営その他あらゆる面で相



理事会風景

Board of Regents Meeting

談役として貴重な助言を与えている。

ミシガン州立大学と琉大が緊密な関係をもつようになったのは本学の創立当時、米国陸軍省が誕生間もない琉大の発展育成に手を貸してくれる適当な大学を全米の大学の中から選んでほしいと米国教育評議会に依頼しミシガン州立大学が選ばれたもの。

特にミシガン州立大学が選考された理由は、琉大が日本本土などに見られるような従来の大学と趣を異にし、教授・研究に加えて一般の人々に学内での研究成果を普及する「普及活動」に重点をおく新しい大学の理念をとり入れているところからきている。というのはミシガン州立大学は、前述の新しい理念を実施した米国での最初の大学の一つだからである。

この派遣教授団の目的とすることは、新しく教育計画をたて、それを実施拡大しつつある諸地域で教育的ならびに技術的方法について助言指導することで、ミシガン州立大学では沖繩の外に、ヴェトナム・パキスタン・南米など多くの大学と提携して、それぞれの国の教育の発展に力を貸している。

ミシガン教授団が、最初に琉大に派遣されてきたのは

**MICHIGAN STATE UNIVERSITY
ADVISORY GROUP**

A special feature in the operation of the University is its close relationship with Michigan States University since 1951.

In 1951, the Department of the Army of the United States asked the American Council on Education to select a college or university in the United States to develop a program of assistance to the University of the Ryukyus. Michigan State University was chosen because it was a leading land-grant college, and it was considered desirable to pattern the University of the Ryukyus after the land-grant system. An educational philosophy which emphasizes teaching, research, and extension would, it was thought, best suit an institution whose main objective should be service to the people of a newly developing country.

This year, headed by prof. Richard C. Fell, who is a consultant in vocational education, in the Group are specialists in student affairs (Dr. Rowland R. Pierson), library science (Prof. David W. Heron), English (De. Ralph P. Barrett), and engineering (Prof. Frank S. Roop).

**UNIVERSITY OF THE RYUKYUS
FOUNDATION**

The cost of educating a student in a university cannot be met by tuition fees, government appropriations and grants alone, and it was inevitable that this University, too, must depend on private subscriptions for additional financial support for its proper and effective operation.

In order to attain the objective of collecting funds for the use and benefit of the University and its students, a corporate body known as the

教授団長

職業教育顧問

リチャード・C・フェル

Prof. Richard C. Fell
Director and Consultant
in Vocational Education



University of 1951, under CA Ordinance No. 50.

The Foundation is operated by the board of Directors, which consists of the President and the Business Manager of the University, Director of Education, USCAR, and a member of the MSU Group, all of whom are ex-officio members, and eight other members selected by these ex-officio members.

The Foundation is empowered to operate and manage, or sell or lease any properties received, and to invest and re-invest any funds received or generated by the Foundation.

The Foundation has been a very efficient body in helping the University grow, notably in the establishment of the Shikiya Memorial Library for the use of the students and faculty. The Foundation also administers scholarships and loan funds for the benefit of needy students. Each year twenty-five percent of the student body has received scholarships and long-term or short-term loans from these funds.

Among the prominent properties owned by the Foundation are the Shikiya Memorial Library and the University Book Store. In addition, the Foundation, in close cooperation with the Asia Foundation and Rockefeller Foundation, is participating in such important programs as the exchange of academic achievements and cultural information with other countries. The aid of both the Asia and Rockefeller Foundations to the University of the Ryukyus Foundation amounted to several thousands of dollars by 1959, and is increasing year by year.

開学後間もない 1951 年 9 月で、それ以来六名の教授が 2 ケ年宛の任期で琉大で勤めて現在に至っている。

これらの米人教授は、各人の専門の分野で講座を受け持つたり、調査研究を指導したり、大学と社会を結ぶ普及活動を推進するなど発展の途上にある琉大に、アメリカの進んだ教授法、教育技術を紹介する点でも、大きな助けとなつている。ミシガン教授団に関するすべての費用は米国防軍省が負担している。

琉大が真に大学の名に相応しい施設をもち、急速に進展していく学問の研究におくれをとらないで内容を充実させていくのに、先立つものは資金である。

教育の機会均等のスローガンを実際にみのらせ、不遇な家庭の若者たちに学ぶ喜びをわかつにもまた金が必要。これらの要求をみだし、琉大が琉球社会の発展に奉仕し、人類の福祉の増進に寄与する大きな役目を果していくには、実に莫大な金が是非とも必要である。琉大はどうしてその巨額の金を賄っているのだろうか。

琉球大学予算

下の表をみると、琉大の予算の推移がよく分るが創立の1950年から52年度までは琉大自体の予算はなく、53年度に至つて始めて琉大予算を計上しました。当初25万余弗であつた予算が、年々学生数の増加とそれに伴う施設、

琉球大学の財源

年度	才入予算額	教育才出予算及補助金			学内収入 その他
		民政府	琉球政府	計	
1953	\$ 254,972.35	\$ 248,924.35	\$ 0	\$ 248,924.35	\$ 6,048.00
1954	319,678.38	65,000.00	216,666.67	281,666.67	38,011.71
1955	382,322.50	90,000.00	253,750.00	343,750.00	38,572.50
1956	489,371.67	58,333.33	375,000.00	433,333.33	56,038.34
1957	600,560.00	25,000.00	491,666.67	516,666.67	83,893.33
1958	599,384.17	10,000.00	512,833.33	522,833.33	76,550.84
1959	865,372.00	190,000.00	529,167.00	719,167.00	146,205.00
1960	767,704.00	0	645,000.00	645,000.00	122,704.00
1961	1,030,426.00	255,000.00	708,670.00	963,670.00	66,756.00
合計	5,309,791.07	942,257.68	3,732,753.67	4,675,011.35	634,779.72



カウンセリング顧問
ローランド・ピアソン
Dr. Rowland R. Pierson
Consultant in STUDENT
AFFAIRS



図書館学顧問
ダビッド・W・ヘロン
Prof. David W. Heron
Consultant in
Library Science



Franks Roop
Consultant in
Civil Engineering
Ralph P. Barrett
Consultant in
English

ピアソン教授によるカウンセリング講習
Counseling lecture by Dr. Pierson



設備の拡充などで予算も膨脹の一途をたどり、10周年を迎えた61年度では、100 余万弗と、53年度の約四倍になつている。才入は、学内収入の他に琉球政府、米民政府からの補助金を以つて充てられているが、その予算に対する比率は過去 9 ケ年を通算して琉球政府の補助金が約71%、米民政府から約17%、学内その他の収入が約12%となつている。これをみても、琉大が本当に琉球住民の大学である事が分り、それだけに琉大も又、住民のための大学でありたいと希い、努力している。



理事長
稲嶺 一郎
Ichiro Inamine
Chairman



理事
国場 幸太郎
Kotaro Kokuba



理事
富原 守保
Shuho Tomihara



理事
宮城 仁四郎
Jinshiro Miyagi



理事
照屋 知広
Chiko Teruya



理事
ロイ・中田
Roy Nakada



職責上理事
H. ロバート・キンカー
H. Robert Kinker
Ex-officio



職責上理事
リチャード・C・フェル
Richard C. Fell
Ex-officio



職責上理事
安里 源 秀
Genshu Asato
Ex-officio



職責上理事
真栄城 朝潤
Chojun Maeshiro
Ex-officio

琉球大学フアウンデーション (基金財団)

琉大には、「琉球大学フアウンデーション」と呼ばれる基人団体がある。これは1951年9月民政府布令によつて設置されたもので、大学ならびに学生の利益のため、またその使用に供するため、利益金を生み出す目的をもっている。具体的に言うところ琉大フアウンデーションは、大学や学生の必要とするものを調べ、これを国籍の別なく有望な寄附者に公表して資金の寄附を勧誘し、受領する役目を担っている。従つてフアウンデーションは、贈与・遺贈・慈善行為や契約によるか、または他のどんな方法によつてもたらされたものであつても、その種類や所在の如何を問わず、すべての物品の寄附募集および受領の権限をもっている。(但し不動産の譲渡は民政官の許可が必要。)

フアウンデーションは、法的条件に従つて受領したすべての財産の運営・管理・売却・かつ貸与の権限をもっており、また受理した寄附金もしくは、フアウンデーションの管理下にある財産から生じた利益金を投資、再投資することもできる。こうして得た利益金を大学の要請に応じて譲つたり、奨学金や貸与金を設定するなどして、フア

ウンデーションは大学や学生の便益を図っている。フアウンデーションが大学の便益に資している大きなものの中に志喜屋記念図書館がある。これはフアウンデーションによつて管理され大学に使用させている。これまでフアウンデーションが学生のために奨学金を世話したり、長期の資金を貸したりした数は莫大なもので、59年度だけをとつても実に総学生数の四分の一(約500名)の学生が奨学金か貸与金の恩恵を得て勉学している。これらの奨学金貸与金の多くは米国人、その団体、琉石、その他民間団体から支給されているものである。又、フアウンデーションはアジャ財団、ロックフェラー財団などと密接な連けいの下に学術文化の交流等、重要なプログラムを進めており、両財団が本学フアウンデーションに寄せる財政的援助は莫大なもので、1959年まで既に数万弗に達しているが更にこれは増加しつつある。今後益々、琉大が発展するためには、琉球や日本本土に住む人々の、本学に対するより一層の深い関心と物心両面からの暖い援助が歓迎される場所である。

学 部

現在琉大には三つの学部がある。文理学部・教育学部・農家政工学部で、いずれも大学の教科の教授・研究が中心で、また大学院は設置されていない。

文 理 学 部

三学部の中で最も大きな学部で、五階建の理系ビル及び三階建の新築文系ビルの中に13の学科をかかえている。この学部では、他の学部の学生がよりよく社会を理解し、環境に自らを上手に適應させていくのに必要な講座を一般教養科目として提供すると共に、さらに専門的知識技能を修得しようとする本学部学生のために、専門的な教課目を提供している。

国語国文学科は、国語、国文学を究め、又国語教育の振興に役立つ人々のために、漢文や外国語をも含む広範囲の課目を揃えている。

英語英文学科は、英語、英文学を研究する人々のために、学理的なものを授け、また実用的な生きた英会話の訓練にも力を入れている。



文理学部長
赤嶺 康成
Kosei Akamine
Dean, Arts and
Science Division

史学科及地理学科では、広く世界の歴史、文化の起源人口問題など広汎にわたる講座を提供しているが、特に琉球の歴史や郷土地誌など日本史や東洋史とつながりをもたせて学ばせている。

法政学科では、学生が卒業後、司法界及び一般官庁の公務員などになるのに必要な基礎知識や専門的技術などを教えているが、琉球の政治、東洋の政治、米国及び欧州の政治、国際問題など変化に富んだ課目を提供している。この科では、先に早稲田大学総長の大浜信泉氏、国際法学者の入江啓四郎氏(愛知大学教授)などを招き教課目編成などについて助言を受けて内容の充実を図つた。

社会学科及経済学科では、学生は専門的な知識を学ぶと共に琉球社会の分析、経済の変動など身近な問題とも取り組み、これを学問的に掘り下げて、卒業後に役立てようと努めている。

商学科は、商学全般にわたる高度の専門的知識を教えると共に、実用的訓練を重くみて、タイプや簿記会計、商業英語、速記など学生が卒業後すぐに役立てうる技能を養っている。

三階建のスマートな文系ビルとその別館

Classroom Building and its annex



ACADEMIC ORGANIZATION AND ACTIVITIES

As is true of every university in a democratic society, the major function of this University is to provide students with a sound foundation of which to build an intelligent interest in personal, family, social and civic problems, a better understanding of these problems, and a greater ability to solve them. In addition, it provides students with training and experience in their special fields of interest.

The University of the Ryukyus offers academic programs leading to Bachelor degrees in eleven areas: Literature, Law, Sociology, Economics, Business Administration, Arts, Science, Education, Agriculture, Home Economics and Engineering. The work for these degrees is completed in four academic years and includes a group of studies designed to insure the common possession of the essentials of a general education as well as those studies which will meet the students' special interests and objectives.

ACADEMIC DIVISIONS

The University of the Ryukyus comprises three academic divisions—Arts and Science, Agriculture, Home Economics and Engineering, and Education.

The largest of the three is the Division of Arts and Science, which consists of Departments of Japanese, English, History, Geography, Law and political Science, Sociology, Economics, Mathematics, Physics, Chemistry, Biology, Fine Arts, and Business Administration.

本学が誇るテープ・レコーダー実験室
English Language Audio Laboratory
located in the Classroom Building



実験中の化学科学生
Laboratory-activity by
the chemistry students

The English Department has developed a program with the view of helping all students acquire the ability to speak English as well as they speak Japanese. Under this program which began in April, 1957, all freshmen are required to take six hours of English per week for two semesters — an intensive drill in oral English. For the more efficient implementation of this program, the University is using forty-five tape-recorders in the English language Audio Laboratory, which is now located in the Classroom Building; 33 of these were purchased with grants from the Kellogg Foundation of Michigan and the Asia Foundation, and 12 were donated directly by the Asia Foundation.



美術科学生によるデッサン風景
Fine Art Students
at dessin practice

美術工芸科は、郷土の一流の美術家たちを教師にもち古くからいく多のすぐれた芸術作品を生んだ郷土の芸術文化を再現し、さらにその向上発達に貢献しようと力を注いでいる。

数学科、物理学科、化学科では、それぞれ科学者となり、又科学教育に従事する人たちに必要な基礎的および専門的知識や技術を教授しているが、直接学理を郷土の問題の解決に応用する実験などもあわせて行っている。一例をあげると、化学科では郷土の製塩の質の向上や増産を化学的に実験している。

生物学科は、植物標本室をもち、全琉から集められた植物の標本が教授学生によつて分類整理されているが、完備すれば、諸外国の大学との間に、標本の交換もできると蒐集に張り切っている。また同科は、琉球列島の動物の標本も集めており、今後はさらに地理学的、人類学的標本から過去の文化的遺産も集めて展示することになっている。

文理学部には、本学が誇りとしている英文学科所属の聴覚実験室がある。この中には二個のイヤホン付の45台のテープレコーダーが備えてある。これらの施設はアメリカのアジャ財団およびケログ財団の援助でできたもの。琉大では、本学に国際的特色を与える計画の一つと

して、57年の4月から2ヶ国語を採用実施している。これは全学生が卒業するときには、日本語だけでなく現在世界語といわれている英語でも十分に用が足せるように、新入生はすべて英会話を週六時間、二学期間を通じて履修するよう要求されている。英文学科の教授は殆んどがアメリカで学位をとつた人たちで、しかもテープレコーダーを使用しての最新の教授法による英語教育は、琉大をして東洋で最もすぐれた英語教育を実施している大学の一つとして位置づけるものと期待されている。



美術科学生による陶芸実習
Pottery practice
by Art Students



工芸ビル Vocational Building

The new five-story Science Building houses a museum and herbarium containing many specimens of the flora and fauna collected from all over the Ryukyu Islands. Both staff members and students are on the alert for animal and plant specimens to add to the study materials and display shelves.

As these collections increase, exchange will be made with those kept by colleges and universities the world over.



理系ビル全景、真理を求めて若人は倦く事を知らない
Science Building, in which students seek for truth today, too

The university now has a law curriculum equivalent to that offered by most Japanese universities. The University of the Ryukyus Law and political Science Department is grateful to president Ohama of Waseda University and professor Irie of Aichi University in Japan, who visited the campus and made recommendations which resulted in the development of the present law curriculum.

Another step in the recognition of the University of the Ryukyus was evidenced in a letter received in April, 1957, from the Ministry of Justice, Japanese Government. This letter stated that Ryukyu University graduates were now exempted from taking preliminary bar examination in Japan. The basis for this exemption was the acceptability of the University of the Ryukyus general education credits in lieu of the preliminary examinations which are required prior to taking the regular examinations.

The Division of Education has five departments: Education, Elementary Education, Music, Industrial Arts Education and physical Education.

As the institution that grants credits valid for teacher certification by the Government of the Ryukyu Islands, this University prepares selected students for teaching and administrative careers.

Separate four-year curricula are available in both elementary and secondary school teaching.

Since the completion of a new concrete three-story building in 1957, the Education Division has enjoyed offices for its faculty members, lecture rooms, a large lecture hall, an audio-visual center, and child development and tests and measurements laboratories.

This Division will soon have a laboratory elementary school which will provide practice teaching opportunities. Included in the Division's development plan for the next few years are two more laboratory schools, one at the junior high school level and the other at the senior high school level. At present, education majors conduct their practice teaching at nearby public schools controlled by local boards of education and by the Central Board of Education.



教育実習生による授業風景
Teaching practice student at Josei Elementary School

教育学部

琉球大学の卒業生の約70%までが教育畑で働いている。この事実からも本学部がいかにかに大学で、また社会に対して重要な役目を担っているかと言う事がわかる。



教育学部長 与那嶺松助
Matsusuke Yonamine
Dean, Education Div.

郷土の再建と発展に貢献し人類社会の福祉に寄与する次代の人々を指導する教育者を養成するのが本学部の大きな使命である。

琉球における教育を向上発展させるには、教師の資質を高め、高度の教育技術を身につけることが前提となる。そこから本学部では次の三点に重点をおいて有能な教師の育成に努力している。

第一に、教師に広い視野と深い識見を要求し、狭い教授法や教育技術の限定された枠内での訓練から脱して、他の分野の大学卒業者と同等か、それ以上の一般的教養を修得させる。

第二に、教師は一般的知識の土台の上に、更にそれぞれの専門の学科の内容に精通していなければならないとし、教師の深い学識技術を要求する。

第三に、現代の教職は高度の専門的職業であり、教育の科学的理論とそれに基づいた教育技術の修得は、教師に不可欠の要件として実地に訓練する。

本学部では、以上の三点を具備した教師を育てるのを目標に、学生の指導に当たっている。特に日に日に進歩改善されていく教育技術に歩調を合わせて、視聴覚器具などを用いての最新の教授法を取り入れたり、心理学実験室をつくるなど、一段と教育技術の向上に意を注いでいる。教師になる学生は、学校を巣立つ前に本学部で教わった教育理論や技術を教育実習において自ら実地に応用



教育ビル。郷土の教育界に尽す役割は実に大きい
Education Building, which takes an important role in Educational field on Okinawa

検討する機会を与えられ、小・中・高校の教育の実際面における日々の問題の解決など、体験を通じて学べるようになってきている。

現在沖縄では、年々児童の数が増加し、それと共に教師の需要がたかまつている。従つて教育学部では施設の拡充が一段と強化され、約125,564弗の費用で三階建のモダンな教育ビルが58年1月に完成をみた。

その上、児童相談室や小講堂を含む二階建の別館も費用、約39,637弗で完成している。

これらの施設の完成と共に、本学部の機能がより高度に発揮され、教育のあり方に大きな進歩をもたらすものと期待が寄せられている。

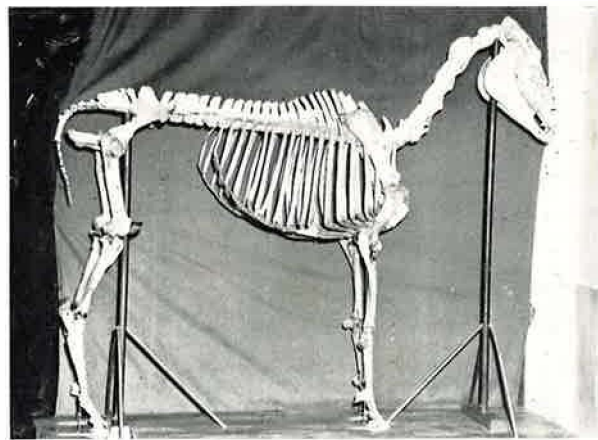
本学部では、更に附属実験学校の設置を計画、既に敷地も購入しその実現に努力しているが、これが完成して琉大の教師養成に一大変化をもたらすのも近い将来のこととなっている。戦前、沖縄の小学校教師は殆んど男・女師範学校で養成され、中学の教師の大半が日本本土で教育を受けたものだった。戦後は、小・中校は勿論高校の教師の養成も琉大の責任となり、それだけに教育学部の教科課程は広汎におよんでいる。

The Division of Agriculture, Home Economics and Engineering has two concrete buildings; one, built in September, 1952, for the Departments of Agriculture, Animal Husbandry Forestry, and Home Economics, and the other, the Vocational Building, completed in February, 1955, for Vocational Agriculture, and Mechanical, Civil and Electrical Engineering.

In this still basically agrarian economy of the Ryukyus, the importance of agricultural education cannot be over-emphasized. The students greatly benefit from their study in classroom and laboratory activities and at the University's experiment and research centers.

The Division supervised the operation of the Agricultural extension Center at Matsugawa in Naha, situated about two miles west of the campus and the Forestry research Center at Yone in Kunigami, approximately 70 miles north of the campus.

Yone Forestry Research Center occupies an area of 1,750 acres and provides an excellent field trip location with abundant study materials in agriculture and forestry. A new dormitory-office building is available for the use of those professors and students who make frequent visits for their studies at Yona.

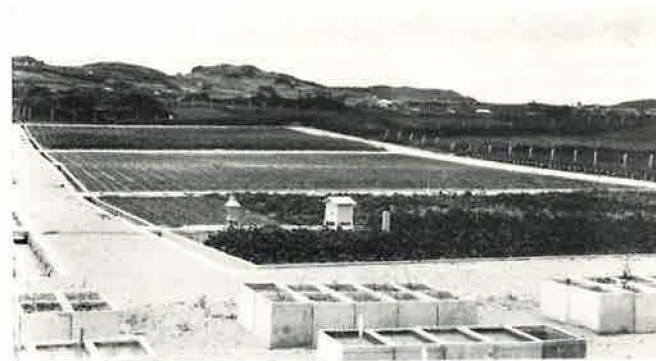


畜産学科製作による馬骨の標本
Horse-bone specimen made
by Animal Husbandry Students



機械工学科実習風景
Mechanical Engineering Students

New courses in civil and electrical engineering are added every year. These courses are incorporated in the Division's curricula to meet the growing demands for higher technical skills from American and Ryukyuan industrial circles, and there are many students who enroll in these courses to prepare themselves in this field.



整然とした石嶺の農業実習場
Agricultural Experiment farm
located at Ishimine

COOPERATIVE TRAINING

The students cannot expect to fully acquire necessary knowledge and skills in vocational training through textbooks and classroom instruction alone. To help them augment their understanding and technical skills, the University has set up a cooperative training program.

本学部に含まれる**初等教育科**は卒業生に一級と二級の普通免許状を与えている。**体育科・音楽科**は同じく卒業生に、中校一級免許状もしくは高校二級免許状を与えている。**教育学科**は、教育学、心理学等の理論的または実際的研究に携わり、将来教育専門家たらんと志す者のために設けられている。卒業生には中校一級、高校二級又は小学校一級の免許状が与えられる。職業技術課。職業技術教育の必要が痛感される現状に鑑み、1961学年度から職業技術科を設置した。高度の職業技術に対する知識と技能を身につけさせ、沖縄の産業発展に寄与する事がねらいである。中・高校教員免許が与えられる。

農家政工学部

本学部は七つの科をもっており、これらは三階建の農学ビルと工芸ビルの二つに分れて教室や実験室をもっている。私たちの生活が農業と切離しては考えられないところから、本学部の教科科目は琉球の生産や経済と結びついたものを多く含んでいる。この学部では次のような二つの目標を立て、他の学部より一段と深く社会生活につながっている。

第一に、学生が社会に対して、最も偉大な貢献ができるような分野で教授・研究・普及する。

畜産学科の誇る沖縄一のホルスタイン
Holsteins pertaining to the Animal Husbandry Dept., one of them produces 1,250 gallons of milk in a year.



農家政工学部長
日越 国吉
Kunikichi Higoshi
Dean, Agriculture,
Home Economics and
Engineering Division

第二に、教科科目を絶えず今日の複雑な社会や人々の要求をみたすのに叶うように保つていく。

この趣旨に沿って、本学部では旧真和志市松川に「琉大農家政工学部松川分室」、また国頭の与那に広大な実習林及び首里石嶺に農業試験場を有し、学理の応用は勿論、直接に農家の人たちに役に立つような、あらゆる研究や実験を行つている。

行つている。

農家政工学ビル Agricultural Building



その成果は、刊行物によつて農家の人たちだけでなく、農業や生産業に関心をもつ人々に絶えず伝達普及されている。

国頭村与那にある演習林は、680町歩の広大なもので、教授学生が春・夏・秋・冬の休暇を利用して演習している。

ここには、みんなの便益を図つて1957年の6月、53坪の教官室兼宿舍が6,000円で新築され、林学科やその他農業関係の人たちだけでなく、生物科、地理学科の職員生徒にも役立つている。

家政学科では、家政学全般にわたつて広く学理を教授研究するかたわら、琉球の家庭生活の設計・運営とも密接につながりを保つて、その改善発展に力を貸している。

Under this program, junior and senior students in Engineering, Business Administration, and Home Economics are given opportunities, during vacation periods, to receive well organized, laboratory-type experiences in cooperation with the American armed forces and commercial concerns.

The instruction is planned and supervised jointly by University professors and personnel of the cooperating agencies. The students who participate in this program receive pay for their services as well as University credits for their training.

Among the American cooperating agencies are the Army Engineers, the Okinawa Engineering District (OKED), the Engineering and Accounting Division at Kadena Air Base, the Machinato Steam Power Plant, Gilbert Pacific Inc., Connell Bros. Ltd., and the Rycom Exchange restaurants.

SHIKIYA MEMORIAL LIBRARY

A university is not complete without a library that affords an opportunity for its students and faculty to conduct their study and research.

The need for an adequate library and its facilities and equipment was keenly felt as the University grew. There was also an ardent wish for a good library expressed by the late Dr. Koshin Shikiya at the time of his retirement from the presidency in 1952, and the plan for its establishment was adopted by the University soon after Dr. Shikiya turned over the presidency to Mr. Chosho Goya. The library was to be built in honor of Dr. Shikiya, who as the first president made it possible for the University to grow soundly in its formative period and who as a distinguished educator had devoted his long career to the education of the Ryukyuan people.

The construction was begun in June, 1954. In order to raise funds, the Shikiya Library Fund Cam-



志喜屋記念図書館、十余万冊を蔵する本学の知識の宝庫
Shikiya Memorial Library, which
holds books of more than 100,000

paign Committee was established. In cooperation with the University of the Ryukyus Foundation and with invaluable assistance from the Ryukyuan-American Friendship Committee, headed by Mr. H. Earl Diffenderfer of the Education Department, USCAR, the Campaign Committee actively engaged itself in fund-raising activities, soliciting donations, selling raffles, and contracting loans from the Bank of the Ryukyus.

The magnificent structure was finally completed in the middle of 1955 at a cost of ¥ 21,750,000—about \$ 181,250—with a total floor space of 27,216 square feet in five stories.

With this library Dr. Shikiya lives vividly in our memory, and the library represents a true symbol of friendship and cooperation between American and Ryukyuan people who so unselfishly and untiringly offered their services in its establishment.

A large reading room, many kinds of newspapers, and stacks holding a total of 62,823 Japanese and Chinese books are located on the first floor. In the stacks on the second floor are kept 18,650 books written in foreign languages.

The third floor provides office space and a reading room, and also has a collection of more than 1,000 precious books and 231 rolls of film that pertain to the Ryukyus.



農学部による普及活動の一コマ

One of the exhibitions
held by Agriculture Div.

学内には、家事実験室、被服教室、家庭管理実習室などがあり、学生は、家庭生活、社会生活のあらゆる面で指導を受け実習している。

機械工学科・電気工学科・土木工学科 戦後琉球を再建するのに特に専門的知識技能を身につけた高級技術者が社会から要請されるようになった。それで本学では、55年度に機械工学科を設置し、ついで57年度から新たに電気工学科と土木工学科を設けて社会の要求に答えている。これらの工学科の設置は、従来の実用工学を刷新強化すると共に、すぐれた技術者を送り出すことによつて社会に奉仕しようとする本学の企画の一つである。機械・電気・土木工学科の学生は、大学に設備が少く十分に実習が出来ないので、米軍の協力を得て、夏や冬の休みを利用し、軍の各種の工場で実習しながら、学校では学べない貴重な体験をものにしていく。

あらゆる種類の機械や設備をもつ軍の工場は、学生にとつて理想的な実習場で、教師にとつても実地に指導できる便利があり、これらの科では今後とも軍の援助協力によつて学生の腕を磨いてゆこうと計画している。

農学科・畜産学科・林学科 農学科は、農業の最新の学理を究明し、実際技術を習得するのに必要な種々の科目が提供されている。畜産学科は、将来畜産面の指導者・教育者として活躍し、或は実業に従事し、或は海外開

拓者として発展出来る人物を養成する。林学科は、林業の経営発展に必要な知識と技術を修得した専門的林業技術者を養成する。特に戦争によつて荒廃した郷土の森林を復元育成し、その合理的経営を対象とする学理の研究と応用は本科の一大使命とするところである。

これら実学の振興は沖縄建設の根幹をなすものであり従つて卒業生の今後における活躍は、大いに期待され、又その職域も沖縄全島に及んでいる。

なお、農学科では前農家政工学部長の島袋俊一教授が、1953年以来当地で精魂を打ち込んで研究していた「琉球列島におけるサビ菌の分布に関する考察」という論文が60年9月6日、北海道大学を通過して農学博士の称号が贈られ、学内外の学究徒に大いなる光を与えた。

温室に育つ熱帯植物 Tropical plants growing
in a green house



志喜屋記念図書館

本学には、初代学長、志喜屋孝信博士を記念して建てられた鉄筋コンクリート五階建の附属図書館がある。図書館の一階には、書庫と閲覧室および新聞閲覧室があり、各種の新聞がとり揃えてある。この書庫には、和漢書が62,823冊入っている。二階には、18,650冊入った洋書の書庫があり、三階には郷土に関する千余冊の

On the fourth floor are periodicals for the use of the students and professors. The office of the Michigan State University Advisory Group also is on this floor.

The fifth floor is an open hall which is used for students' meetings and other events.

Perhaps the most valuable item in the Library is a set of records—works of Wagner, Berlioz, and Tchaikovsky—which is one of only a few sets existent in the whole world. These are the recordings of the performances by the Symphony of the Air Orchestra (the former NBC Orchestra) played without a conductor in honor of Virtuoso Toscanini soon after his retirement from the celebrated podium. These records were presented to the University in May 1955, when the Orchestra visited the Island for public performances.

FACULTY, RESEARCH, AND EXTENSION

Effective operation of university education depends to a large extent on creative, well-informed, and dynamic members of the teaching staff.

This young university, having gone through many handicaps and difficulties, has now come to have a total of 166 qualified members of its faculty, who are actively engaged in classroom and laboratory instruction, in individual and collective research in special fields, and in extension services to the public.

The University must keep abreast of the changes occurring not only in the Ryukyus but also in the world and must always maintain a broad perspective in executing its programs. In order to help achieve these objectives, the University is now emphasizing an exchange-of-professors program.

Each year, as a part of the ARI program, the University has been able to send some faculty members to American universities for a period of one year. In addition, several faculty members are sent yearly to Japanese universities for further study at the expense of the University of the Ryukyus.

In addition to the Michigan State University professors, visiting professors are brought here on contract from Japanese universities and colleges to teach courses and offer advice in various academic areas. A total of fifty-two Japanese professors has been invited under this program since 1953.

RESEARCH

The research projects that are now conducted by the University professors are both extensive and intensive. Most of this research deals with problems that pertain to the Ryukyus, and which have not been fully studied and explained in the past.

Significantly, these research projects are mostly concerned with many and various subjects in the field of agriculture—a field where there is a great need for improvement by the application of new scientific techniques.

家政科割烹実習
Home Economics Students
at cooking practice



文献と231のマイクロフィルムを具えた郷土資料室、及び図書館事務を司る事務室と100脚を擁する閲覧室がある。四階には、定期刊行物、学会誌、紀要などをおさめた54席の雑誌室があり、一部はミシガン大学教授団室に使用されている。五階は、ホールになつていて学生の集会、その他催しものある時に利用されている。

10万余冊の豊富な図書や資料を揃えたこの図書館は、本学の教授・職員・学生の研究にとって不可欠のものであるばかりでなく、また広く琉球のみなさん方がいろいろと専門的研究をされる時に利用して役立てうる貴重なものである。実社会にあつて研究図書に不自由なきつている方々が、この図書館を利用されるのを本学では歓迎している。なお、この図書館には世界でも数少ないと言われているレコードセットがある。これは1955年、アメリカのシンフォニー・オブ・ザ・エア管弦楽団が来島した際に寄贈したもので、著名な指揮者トスカニーニの引退を記念して、同楽団が指揮者なしに演奏したもの。ワグナーやチャイコフスキイなどの名曲が含まれている。音楽愛好家はどうぞ。

図書館閲覧室風景
Large reading room
located on the first
floor of the Library



志喜屋記念図書館は志喜屋初代学長が特に図書館の設立に熱意をもつておられた意を汲んで、1954年琉大フアウンデーションが中心になつて、設立準備委員会を組織し、全琉に寄附金募集運動を展開して建てられたものである。これには米琉親善協会も援助し、本学の教授学生は勿論、米琉の人々の美しい協力が実を結んで、745坪、実に181,250弗の莫大な費用をかけて完成したものである。

1955年12月には、琉球列島民政長官レムニツター大將ほか内外多数の著名士が参列して盛大な開館式が行われた。

図書館長
仲宗根政善

Seizen Nakasone
Chief Librarian



教授・研究・普及

琉球大学は、琉球の男女に教養的知識の土台の上に専門的知識技能を修得させ、有能な社会の一員を育成すると共に、世界文化の進展と人類の福祉に貢献することを目指している。

この趣旨に沿つて本学での教科課程は、学生が真理を探究するかたわら、変転の激しい時勢に適切に即応できる応用的能力を身につけるよう配慮して、編まれている。そしてまた琉大での教授・研究や普及活動は世界とつながりを持ち、広い視野に立つてなされねばならず、本学では、特に交換教授制度に力を注いで、日本本土、米国の他からすぐれた教授を招聘し、代りに琉大の教授を派遣して常に異つた文化の交流を図っている。

Some of the research projects taken up by our professors include studies on cultural practices for citrus, pineapple, banana, and papaya in the Ryukyus; factors in the occurrence of hog epidemic diseases; farm management in rice-field areas; forest tree breeding; microorganism harmful to useful plants; and periodicity in fertilization.

Research has also been completed or is in process now in the following fields: fishing industry, Ryukyuan dialect and dramas, typhoon structure and whirl, taxation in the Ryukyus' economy, Ryukyuan system of marriage and inheritance, personality and achievement tests for secondary school students, and American literature in the period of realism.

Opportunities are made available to the university professors to attend and present papers at academic conferences in Japan. Also, two instructors will participate in the International Historical Conference of Scholars, to be held in the Philippines on November 25—30, 1960.

教務部による国際普及講座
International Extension Class
held by Office of the Registrar



農学部による普及活動
Extension Activity sponsored
by Division of Agriculture



一般成人対象の夜間英語講座
English Night Class for all ages



EXTENSION SERVICES

Extension activities constitute one of the most important programs of the University of the Ryukyus. The University must make available to the public the results of research which may be useful in improving the economic and cultural standards of the Ryukyus.

The extension programs are provided by three major groups: Extension Section, Agriculture Department, and Home Economics Department.

Most extensive of the programs conducted under the supervision of the Extension Section is the in-service teachers training program held during each vacation period (summer and winter).

There are not sufficient University professors to handle the large demand for summer school classes by public school teachers who wish to improve their teaching qualifications. For this reason, over thirty visiting professors from Japanese universities are engaged every year to teach during the summer sessions in the Ryukyus. This program has been conducted

招聘教授

1953年以来、琉大が日本の大学から招聘した教授の数は52名、文教局や民政府の協力で、夏期講習のために招いた教授の数が159名の多きにのぼっている。

1959年以降、この現職教員講習のための教授招聘は文教局が担当し、色々と教職員の便利をはかっている。



招聘教授との懇談会
Meaningful talk with invited professors

招聘は本土からだけではない。米国、その他の国からフルブライト奨学制度によつて教授を招聘し、短期間ながら本学で講義を担当していただいている。このように外人教授の招聘は東西文化の融合点としての琉大に、国際的性格を加味するものとして内外から大いに期待されている。

学会出席

一方、琉大からは毎年数名の教授を米国または日本本土へ、1ヶ年の期間で派遣しそれぞれの専門の分野で研修させている。さらに大学の内容が年々充実していくにつれて、学内での調査研究が活発になり、これに伴つて教授職員が本土や諸外国での各種の学会に出席して研究発表することも多くなっている。また今年60年の11月の25日から30日までの間、フィリピンで開催される国際歴史学会にも二人の教授が出席することになっている。



教務部長 中山 盛茂
Seimo Nakayama
Registrar

このように琉大は、絶えず諸外国の学界とも密接なつながりを持ち、琉球社会の進歩向上に役立つ新知識や技術のとりいれに専念している。

普及活動

琉大では既に述べたように、学問を学問のためにだけ教授・研究するのではなく、本学での研究成果を広く琉球社会に普及し、人々の経済的または文化的生活の向上に奉仕する大きな責任をもっている。

琉大では1951年の4月以来、小・中・高校の現職教員から各地区の教育長に至るまで、その資質向上のための講習会や研修会を催したり、大学に入っていない人々のために通訳講座や夜間講座を開いたり、英語を必要とする職場にある人たちのために、夜間を利用して英語教育をするなど、できる限りの方法で学外の人々の便益を図っている。

現職教員の夏季講座風景
In-service teachers listening
to a Summer vacation lecture





キャンパス風景
Grand view of University Campus

with financial assistance from GRI and USCAR until 1958; however, it has been carried out by GRI since 1959. By 1958, 159 Japanese professors had taken part in the summer program.

In addition to this program, the Extension Section offers correspondence courses to public school teachers and adults, publishes Extension pamphlets and bulletins for distribution to public school teachers, and provides adults with various courses in night classes. Special attention is given to the extensive night classes in English. These are operated throughout the year, each term running for a period of three months, and are designed to help adults of all ages acquire a functional knowledge of English.

The Section also provides accredited specialized courses to the students enrolled at the Okinawa Nursing School operated by the Social Welfare Department, GRI.

During 1959 alone, a total of 7,288 teachers and adults benefited from these extension programs; of

these people, 5,640 earned 12,702 University Extension credits. The figures for the past nine years' extension activities show that of the 76,232 trainees who participated, 64,858 earned 161,642 credits.

The Agriculture Department's extension services have been greatly expanded and improved as the years have gone by. Utilizing the facilities at agricultural experiment stations, public schools, public assembly halls in local communities, the Ryukyuan-American Cultural Center, and working on rice fields and farms all over the Ryukyus, the Department's staff has conducted lectures and demonstrations on such problems as insect and disease control, methods of cultivation, soils and lime application, fertilization, and methods of making better "Miso" (bean paste for soup seasoning). During the first half of 1960, the Department conducted lectures and projects on 76 different occasions and distributed a total of 29,000 pamphlets for the use and benefit of the people.

Like the Agriculture Department, the Home

その他、政府と協力して看護学校の生徒の指導、各地区の文化会館と手を取って、家庭の主婦や一般女性のため料理の講習、育児問題の研究、衣服や住いなど生活改善の工夫指導、また農夫のために新しい農業技術の紹介牛乳や鶏卵の質量の向上、害虫の駆除の実地指導。さらに「農家便り」等普及雑誌を毎月無料で配布するなどいろいろと巾の広い普及活動を行っている。

具体的な例をあげると、本学の普及係で世話している現職教育、通信教育、夜間講座、単位修得試験、ガリオア英語講座、夜間英語講座などをして、動員した受講者の数は、51年から59年度までに76,232人、普及講座によって単位を修得した者の数が64,858人。

授与した単位数が実に161,643単位の多きにのぼっている。

普及活動は今日も山や離島に及ぶ

Extension Activity spreads over every corner around the Ryukyus.



これらの講座は春・夏・秋・冬の休暇を利用して開くのもあれば、年二回または四回開かれているのもあり、その開設場所は、本島は勿論、宮古、八重山、久米島など離島にも及んでいる。

農家政工学部の普及活動も55年度から活発になったが農学関係では初めの頃は、北部や中部の農林学校で、いもを加味した食餌による鶏の飼育、琉球に生える野草による牛の飼育・天候や昆虫が牛乳生産に及ぼす影響などについての講義が主であった。ついで、中央や北部農業



農学科標本室における毒蛇の標本
Specimens of "Habu", venomous snakes, in the Specimen Gallery belonging to Department of Agriculture

試験場などで、その職員や従業員または農事指導者などに対して、野菜栽培について実地指導、また宮古農業試験場で社会の指導者や青年会員などに牛や豚の飼育管理の指導、さらに伊是名村、久米島仲里村公民館などにおいては、病害虫の展示会及びその駆除について講義指導するなど。因みに60年度の1月から6月までを例にとっても76回にわたって社会の人々に対する奉仕活動をしており、29,000冊の普及雑誌を配布している。家政学科の方でもこれに劣らず社会の中に入りこんで指導助言に当たっている。一例をあげると、国頭村や今帰仁村、その他の青年会員や婦人会員に「いかにしてりつばな味噌を作ることができるか」などについて指揮したり、石川市では「大豆を用いたの料理法」、那覇では「正月の料理法」、などとあらゆる生活の分野に及ぶ懇切な助言をして学内での研究を社会に公開普及している。これらのわずかな例からも、琉大が琉球の人々のために奉仕しようと努力していることが明らかである。

本学は今後とも一層社会と深いつながりをもちつつ、学問の研究・普及を通じて、琉球の経済的、また文化的発展に力を貸すことができるのを大いに誇りとし、喜びとし、責任としている。



学生会長の選挙 Election of Chairman of Student Association

Economics Department conducts many demonstrations, exhibits, and lectures to help the people improve home management and child care.

The past activities of the department include lectures and demonstrations on such topics as : methods of cooking by using canned foods, better cooking of vegetables and meat, better care of furniture, cleaning and pressing of clothes, improved nutrition, use of seasonal foods, and better housing and eating habits.

These activities are conducted at Ryukyuan—American Cultural Center, in public schools, and in local community halls in accordance with the participants' requests and conveniences. More and more people come to realize the usefulness of these University extension services, and a greater responsibility has now been placed upon the University to meet the needs of the public.

スポーツによる米琉親善の一コマ
Snapshot of Ryukyuan-American
Friend ship through sport



明治・大正・昭和にわたる服装の変遷…大学祭
Presentation of Costumes at the University
Festival

農家政工学部による
映写機での普及活動

An Extension Activity
of film showing held by
Division of Agriculture,
Home Economics &
Engineering



女子寮での楽しいおしゃべりの一とき
Students enjoying talkative time
in their Dormitory



BUSINESS ADMINISTRATION OFFICE

The business affairs of the University, which are so essential to the operation of its educational programs, are transacted by the Business Manager and his sixty-nine staff members. The Business Administration Office is composed of the General Affairs Section, Finance Section, and Maintenance Section. In the General Affairs Section the integration and adjustment of internal business are made. The receipt, dispatch and custody of secret and official documents, and the maintenance of personnel records, such as those pertaining to appointment and dismissal, salary scale and position classification, are additional responsibilities of this section.

The Finance Section is responsible for such matters as the preparation of budgets, settlement of accounts of income and expenditures, care and disposition of properties, purchase of supplies, etc. The Section also takes charge of any business matters pertaining to the University of the Ryukyus Foundation, the only financial source for the needy students. In the Maintenance Section plans or designs and documentary procedures for new construction are made. It is this Section that takes care of the University buildings and that beautifies the campus of the University.

事務局



事務局長
真栄城朝潤
Chojun Maeshiro
Business Manager

本学には大学教育をスムーズならしめるために事務局があり、庶務課、会計課、及び施設課から成っている。

そこでは、事務局長以下69名の職員が各自の職務を担当している。

庶務課では、学内事務の総合調整がなされる。秘書に関する事務、琉大週報、公文書の収受、発送、保管も行われ、職員の任免、給与及び職階等の人事に関する事務もこの課で行われている。

会計課では、会計に関する調査、企画、予算編成、才入才出の決算、大学財産の管理及び処分、物品購入等に関する事務がとられている。

また、学生に経済的援助を与えるファウンデーションの事務もここで取扱われている。

施設課では、新工事の企画、設計、工事施工手続等の事務がとられているが、既設建築物の管理、維持、構成整備及び美化等もこの課でなされている。

本館
Main Building



学生生活

大学での生活は、学生生活の最後の頁を飾るものである。深い学識と秀でた技能と高邁な品性とを身につけて実社会に門出する最終の準備の場である。



学生部長
新垣 義一
Giichi Arakaki
Dean of students

曇りのない知性と、若鮎のような肉体と、限りない希望と信念をもつて明日に生きる琉大の学生は、どのように最後の学生生活をすごしているのだろうか。

研究室や教室だけが学生生活ではない。スポーツに、演劇に、創作に、娯楽に、また日頃の寮生活に、これらいたるところに学生の求めるもの、研さんの場がえられるのである。学生の自主的な集りである琉球大学学生自治会では、常に課外活動を奨励し、その傘下の各研究クラブと協力して競技大会、柔道大会、演劇会、ダンス・パーティーを催して学生間の親睦、福祉の増進を図っている。同時に純粋に学生としての立場で、政治や経済や社会、沖縄の日本復帰問題などを研究論議している。

自動車クラブの「日本縦断自動車旅行」の出発準備
Motor Club making ready for running through Japan



研究雑誌

開学もない頃は、僅かしかなかった研究グループが今では65のクラブ組織をもち、顧問教官の助言の下に研究雑誌を出しているのも多い。

琉大新聞部は、学業の余暇をさいて月々学生新聞を編集、学内外の重要なニュースを報道して学内の人たちに奉仕している。また文芸部は「琉大文学」を刊行、新しい文学の動きは若い人々の手で熱心な創作活動をつけ、学内外の注目をあびている。そのほか主な研究雑誌をあげると次のようなものがある。生物研究クラブ刊行の「生物クラブ」畜産部の「畜産のあゆみ」、英語部の「英文学」、心理学部の「心理学」、教育部の「教育」、経済研究部の「経済論叢」「バランス・シート」、物理部の「エネルギー」、化学部の「化学」、そのほか「地歴」「農産加工クラブ誌」「アグリカルチャー」、[視聴覚教育]等々。

固い研究だけが琉大生の課外活動ではない。音楽愛好家の集いである音楽鑑賞部では、クラシックからジャズ

各クラブの刊行した研究雑誌のいろいろ

Publications of various studying clubs



STUDENT LIFE

CLUB ACTIVITIES

The University provides many opportunities for the students to take part in extra-curricular activities for academic and recreational purposes. All students are members of "Ryūjī Gakusei Jichikai" (Student Self-Governing Society of the University of the Ryukyus), which sponsors athletic, musical and social events, publications, and other student activities.

Most of the student clubs, representing diverse student interests, were organized soon after the University was formally opened in 1950, and there are now some sixty-five clubs actively engaged in various programs.

Students are given opportunities for staff work on various campus publications: e. g. the University newspapers and the University literary magazine, study and research pamphlets in such fields as psychology, law, animal husbandry, crops and gardening, business and economics, language, science, agriculture, forestry, and home economics.

Those who enjoy participation in musical activities find opportunities in the students' chorus and band and in a music appreciation club. Those interested in sports develop their skills in sports clubs, ranging from the Basketball Club and Tennis Club to Judo and Karate (Ryukyuan art of self-defense) Club.

大学祭における空手クラブの演武
Demonstration of "Karate" at the University Festival.



学寮祭—パン食い競争
Students are enjoying games at the Dormitory Festival.

The University athletic teams are now among the best in the leagues of teams composed of young men and women of post-college age in local communities. Competing in the all-Ryukyuan "Conference" athletic meet with twelve teams organized in that many geographical districts, the University track and field team has so far won two championships in two participations.

FIELD WORK

Field work for the purpose of gaining first-hand knowledge to supplement their classroom experiences constitutes a major activity for the students at the University, and it also helps maintain school-community relationships.

Agriculture students and professors frequently make trips to study the various problems occurring in forests, farms, and rice fields, in order to help the people in improving agricultural methods.

Students, studying the history of the Ryukyus, visit rural areas to learn about traditional Ryukyuan customs, manners, and folklore, and to study various dialects still in use which bring to light more complex aspects of the present-day Ryukyuan language.

They also carry on archeological studies, such as the excavation of old shell mounds, in an attempt to learn more about of the past.



音楽発表会

Presentation of Music



におよぶ名曲に聞き惚れたり、歌うことのすきなものは合唱部を作つて、はちきれぬ青春の若さを歌に托したり、社交ダンス部は、バンドを招いてパーティを催し職員学生を喜ばすなど、やわらかい面の生活もまたはなやかである。

歌つたり踊つたりは、学生生活の一部。琉大生の本領はむしろ次のような課外活動にある。新民法が実施されて間もない沖縄で、法学研究部の学生は、各地で法律相談所を設け、やさしく民法を解説したり、その他の法律問題で困っている人たちに、無料で相談に応ずるなどして、学生生活の貴重な時間を役立てている。

また農村問題研究部の学生は、農村を廻つて農夫と語り合い、むずかしい問題があると持帰つて学校で研究、その解決を一緒になつて考える。方言研究部の学生は琉球各地の方言を丹念に調査し、琉球古典舞踊研究部員は各地の専門家たちの協力をえて、自ら三味線を握つて古典芸能の保存に努めるなど、学生の課外活動はまことに活発である。

大学生活で、教授と学生の心のふれ合いほど尊く印象に残るものはない。教授は学生を友人としてもてなし、学生はよき相談相手として師の宅を訪れる。このような師弟のわだかまりのない、なごやかな交歓によつて、琉

大での生活は、より一段と深みを増し、たのしみを加える。そして学生にとって首里のキャンパスは、その一生で忘れ得ぬ思い出の場所となつていくのである。

学寮生活

大学での生活は、友人たちと飾り気のない交わりによつて豊かにみえる。その最もよい機会が与えられるのが学寮での生活である。ここでは趣味の違い年齢の差、異つた家庭状況など一切の差異をのりこえて、宮古、八重山から来た者も、国頭の山の中、島尻の海辺から来た者も同じ釜の飯をたべ、喜怒哀楽の生活を共にしていく。

それはそのまま社会生活の反映であり、ただ学生という恵まれた同一の身分でつながっている点で違ふだけである。学寮で豊かな明朗な、たくましい生活を過した琉大生は、社会へ出ても、立派な市民として、のり多い生活を築き上げることができる。現在男子寮は鉄筋コンクリート三階建の二棟で 420名の学生が寝食を共にしているが、更に 400余名の学生は外泊して寮で食事をとつている。

女子寮は今年、60年の 7月 13日に完成したモダンな設備を誇る素晴らしい二階建のトラバーチンを使用したコンクリート建物で、学生 240名を収容し、管理室、



男子寮全景
Panorama of Men's Dormitory

Law students sponsor miniature legal counseling offices at various locations to study legal cases arising in the communities and, with the assistance of their faculty advisors, advise the people concerned. These law student activities are now accelerated because of the new Civil Code that came into effect on the 1st of January, 1957. They are making efforts to help the people better understand the ideas incorporated in this new Code.

LIVING ACCOMMODATIONS

One important educational feature of university life is the opportunity for living together in residence halls.

The twelve quonset huts that served as residence halls for men during the University's first two years were replaced in 1953 and 1954, by two large three-story concrete buildings which now house a total of 420 men. In addition, a large dining hall provides meals not only for the dormitory residents but also for some four hundred students who live off campus due to lack of sufficient rooms in the dormitory.

The temporary wooden dormitories for women had been in use since the opening of the University, but were replaced in 1960 by a two-story concrete building under the University's Five-year Construction Plan. At present 240 women reside in this dormitory.

寮内での読書三昧

Students reading books in their Dormitory



HEALTH CENTER

To protect and to improve the physical health of its students, the University of the Ryukyus built a modern Health-Center in May of 1958. One full-time doctor plus a part-time doctor and two nurses are always available to care for student illness.

SCHOLARSHIPS, PART-TIME EMPLOYMENT, AND LOANS

The annual cost of attending this University consists of the tuition fee of \$ 17, \$ 2 for miscellaneous fees, and \$ 72 and \$ 12 for meals and residence in the dormitory.

About 40 percent of the student body must earn part of their school expenses through part-time jobs that are available on and off campus. These jobs are very diverse. About 25 percent of these working students are engaged in tutoring at private homes near the campus. Many of them work on campus as laborers, night guards, clerical workers, telephone operators and salesmen. Some are musicians in local orchestras and bands, and some work as interpreters, translators, or technicians for military and civilian establishments.

Recognizing that some worthy and capable students find it impossible to secure a college education without financial assistance, the University provides scholarships and loans.

Assistance ranging from full maintenance for the period of four years to short-term loans for 45 days has been granted to many students.

Most of these scholarship and loan funds have been provided by interested American individuals and groups for the benefit of the needy students. These funds are being administered by the University of the Ryukyus Foundation.

食堂、浴場、教養娯楽室等々を備えている。なお、現在は女子寮近くを首里バスが運行している。

琉大で学生生活を過ごすには、どれだけの経費が要するだろうか。まず授業料が一人当り年額17万、1ヶ月の寮費が8万(食事部屋代共)である。安い経費であつても、学生や父兄にとっては大きな負担である。学業を続けていくためには、学生は何かアルバイトを探さなければならない。1959年度の例をとつてみると、アルバイトを必要とする学生は全学生の58%、アルバイトをしなければ学業が続けられない学生が10%もいる。

奨学金

これらの困窮学生に対して大学では、奨学金制度を設け援助している。奨学金には、琉大ファウンデーションの外に、政府教員奨学金、また出身地市町村からの給与金と貸与金があり、現在105名がファウンデーションの給・貸費を受け、100名が政府の奨学資金を受けている。

ではこれらの援助を得ていない学生はどんな仕事をして学業をつづけているだろうか。琉大生のアルバイトは多岐にわたっているが、最も多いのが家庭教師で、ついで一般事務、学内事務、夜警、軍作業の順になつている。

不定期的なものには、一般労務、販売員その他があり、変つたものにはバンドマン、修理工、通訳及び翻訳など特殊技能を生かしたのがある。不自由なく学業を卒える者、アルバイトをしながら学生生活を過ごす者、琉大生の生態もいろいろだが、学生たちは卒業後どんな職場を得ているのか調べてみよう。琉大は既に2,465名の卒業生(修了生を含む)を送り出しているが、これまでのところ琉大卒の就職率は100%を示している。一番多い就職先は教職関係で80%を占め、次いで公務員、軍関係、商社、銀行、進学その他となつている。

ヘルスセンター

学生生活をより一層楽しく過ごすために、本学では1958年5月28日に、ヘルスセンターを設置した。常勤医師一名、看護婦二名、現沖縄医師会長の大宜見朝計先生を非常勤医師にむかえて、常に学生、職員の健康管理に意を注いでいる。

眺めのすばらしい金城区に位置する女子寮
Women's Dormitory completed in 1960, which consists of residence, dining room, recreation room, birth room and other modern facilities.



Health Center, and Doctor Ychida taking care for a student.

上

ヘルスセンター

右

診断中の吉田校医



This year seventy-two students are studying with various types of scholarships, and more than 20 percent of the student body are utilizing, in rotation, either long or short-term loans.

Opportunity is available also for students preparing themselves for teaching careers in public schools to apply for and receive grants-in-aid from the Government of the Ryukyu Islands. Such students receive a grant of \$8.30 per month, and they must accept, upon graduation such teaching positions as are designated by the Director of Education, GRI. About 100-5 percent of the students are now receiving this grant.

GRADUATES, AND THEIR OCCUPATIONS

The University graduated 100 students at the first commencement in 1953 and 450 in 1960, and now the total number of alumni is 2,465, including those who finished the two-year elementary education course.

弁務官奨学資金論文コンテストで一位を獲得、奨学資金を授与される畜産学科の新里正一君

Mr. Shosei Shinzato of Animal Husbandry Student, who got the first prize at the High Commissioner's scholarship essay contest.



大学祭における活花の展示会

Flower arrangement exhibition at the University Festival

About seventy percent of the graduates go into the teaching profession each year. A survey shows, for instance, that out of 450 graduates in 1960, 263 took teaching positions in public schools; 37 got employment at military installations; 37 went into civil service; 33 were hired by commercial firms; 16 were employed by commercial banks; and 20 went to other universities for post-graduate study.



左
砲丸投げで一位を獲得した

城間辰巳選手

A student getting the first prize at a shot-put game



空高く若人は躍動する
The youth jumps up

意气天をつく

琉大チーム

今一息ノ
力走する本学
リレーチーム

University
relay-team



息の合った瞬間ノ
Very momentノ

美しいホームをみせる体育学
科の女子学生
Beautiful form shown by
Physical Education student

1 m 80を軽くクリーヤー 本学の松野栄輝選手
Mr. Matsuno turning a bar of 1.80 meter high





UNIVERSITY
OF
THE RYUKYUS



A part of the University campus

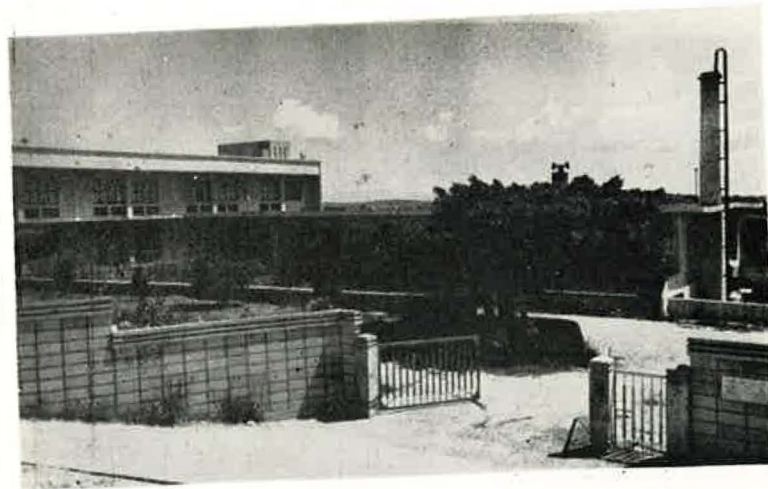
1964 ~ 1965

Graduates

(As of the end of Oct., 1964)

Year	Graduates (4Yr.)	Graduates (2Yr.)
1952	0	18
1953	26	74
1954	122	162
1955	93	130
1956	162	62
1957	253	30
1958	409	14
1959	446	13
1960	471	11
1961	451	0
1962	467	0
1963	570	0
1964	520	0
Total	4,020	514

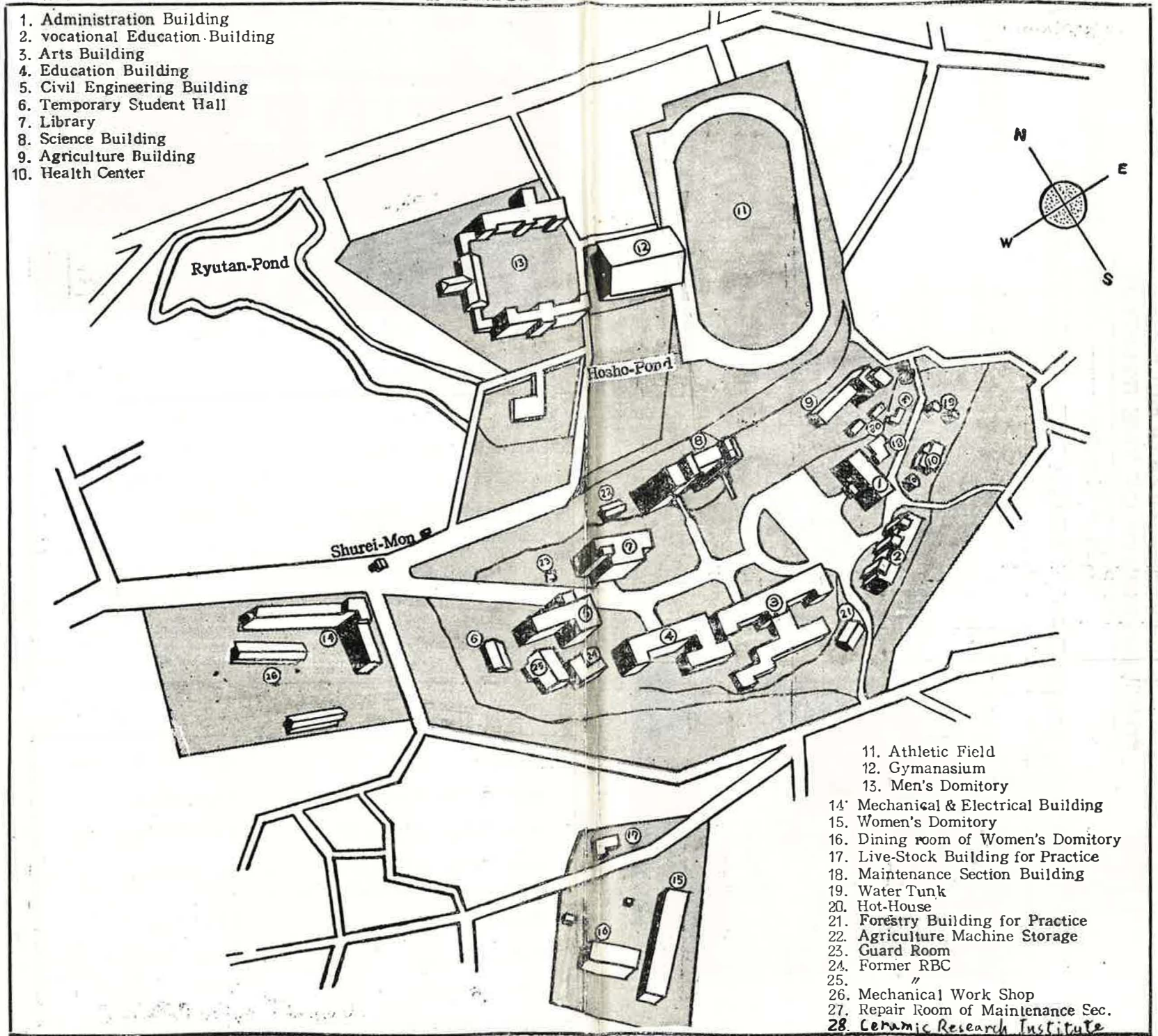
Women's Dormitory



(As of Oct., 1964)

THE MAP OF UNIVERSITY OF THE RYUKYUS

1. Administration Building
2. Vocational Education Building
3. Arts Building
4. Education Building
5. Civil Engineering Building
6. Temporary Student Hall
7. Library
8. Science Building
9. Agriculture Building
10. Health Center



11. Athletic Field
12. Gymnasium
13. Men's Dormitory
14. Mechanical & Electrical Building
15. Women's Dormitory
16. Dining room of Women's Dormitory
17. Live-Stock Building for Practice
18. Maintenance Section Building
19. Water Tunk
20. Hot-House
21. Forestry Building for Practice
22. Agriculture Machine Storage
23. Guard Room
24. Former RBC
25. "
26. Mechanical Work Shop
27. Repair Room of Maintenance Sec.
28. Ceramic Research Institute

Graduate Placement

(As of the end of Oct., 1964)

Type	1953	1954	1955	1956	1957	1958	1959	1960	1961	1962	1963	1964
Elementary School		2		2	15	63	138	117	87	92	113	100
High School	1	8	10	20	49	82	106	107	144	107	189	114
High School	18	61	51	56	95	161	66	48	38	31	57	74
University	1	11	1	3	5	9	8	8	1	5	4	3
Service	1	12	15	14	32	41	50	38	30	46	52	19
Service Agency		5	3	3	5	4	9	18	13	10	15	19
Commercial Firm	3	9	2	5	4	4	20	37	55	53	41	57
Company Employees		9	4	1	10	12	20	38	25	22	11	16
Unemployed	1	1	1		2					2	2	
	1	1	2	3		1	6	11	3	7	5	4
Advanced Studies		1	4	10	13	6	21	23	15	21	12	9
Unknown		2		5	25	24	2	24	40	38	80	105
Total	26	122	93	162	253	409	446	471	451	497	570	520

Experimental Farm



Library

Books in Shikiya Memorial Library (As of the end of Oct., 1964)

Kind of Books	Number of Books		
	Japanese	English	Total
General	4,061	1,727	5,788
Philosophy	4,959	1,242	6,201
History	7,544	3,760	11,304
Social Science	21,885	5,024	26,909
Natural Science	10,975	4,273	15,248
Engineering	9,800	2,133	11,933
Industry	8,165	1,372	9,537
Art	3,926	705	4,631
Linguistics	2,971	1,158	4,129
Literature	10,817	4,868	15,685
Total	85,103	26,202	111,305

Enrollment

(As of the end of Oct., 1964)

College	Department	Freshman		Sophomore		Junior		Senior		Total		Sub Total
		M	F	M	F	M	F	M	F	M	F	
		Arts and Science										
	Japanese Lite.	6	19	8	19	4	13	17	8	35	59	94
	English Lite.	36	21	40	15	40	10	40	5	156	51	207
	History	11	7	11	4	12	3	11	5	45	19	64
	Geography	9	4	6	1	11	0	13	0	39	5	44
	Law & Pol. sci.	58	1	45	1	43	1	34	0	180	3	183
	Sociology	14	3	12	5	10	5	9	3	45	16	61
	Economics	42	2	28	1	30	0	32	0	132	3	135
	Business Ad.	35	9	24	2	27	4	83	1	109	16	125
	Fine Arts	8	4	9	3	13	1	8	0	38	8	46
	Mathematics	20	5	13	1	13	3	15	0	61	9	70
	Physics	17	0	16	0	11	1	15	0	59	1	60
	Chemistry	12	3	11	3	11	0	12	1	46	7	53
	Biology	16	3	7	4	10	1	11	4	44	12	56
	Sub Total(Sex)	284	81	230	59	235	42	240	27	989	209	1,198
	Total	365		289		277		267		1,198		
Education												
	Education	9	10	4	10	10	2	7	4	30	26	56
	Elementary Ed.	27	106	28	89	36	94	50	119	141	408	549
	Music	5	7	2	9	4	6	3	7	14	29	43
	Physical Ed.	20	6	15	7	13	5	19	9	67	27	94
	Technical Ed.	21	0	18	0	20	1	18	0	77	1	78
	Sub Total(Sex)	82	129	67	115	83	108	97	139	329	491	820
	Total	211		182		191		236		820		
Agriculture, Home Economics & Engineering												
	Agriculture	33	0	24	1	25	1	24	1	106	3	109
	Agriculture Ch.	19	2	8	1	/	/	/	/	27	3	30
	Animal Hus.	21	0	13	0	18	0	15	0	67	0	67
	Forestry	20	0	14	0	14	0	13	0	61	0	61
	Home Eco.	0	39	0	33	1	30	0	29	1	131	132
	Mechanical Eng.	29	0	22	0	22	0	12	0	85	0	85
	Civil Eng.	20	0	14	0	14	0	14	0	62	0	62
	Electrical Eng.	25	0	20	0	24	0	15	0	84	0	84
	Sub Total(Sex)	107	41	115	35	118	31	93	30	493	131	630
	Total	208		150		149		123		630		
	Sub Total(Sex)	533	251	412	209	436	181	430	190	1,811	537	2,648
	GRAND TOTAL	784		621		617		626		2,648		

Teaching Staff and Students (As of the end of Oct., 1964)

Year	Teaching staff			Students			Research Students	Special Students
	Total	M	F	Total	M	F		
1950	28	25	3	562	465	97		
1951	29	25	4	759	629	130		
1952	49	44	5	877	716	161		
1953	79	74	5	1,116	899	217		2
1954	101	92	9	1,258	1,000	258		2
1955	111	98	13	1,485	1,130	365		19
1956	126	111	15	1,719	1,308	411		43
1957	134	119	15	1,918	1,447	471		51
1958	139	124	15	2,011	1,449	512	2	72
1959	156	141	15	2,152	1,605	547	7	37
1960	167	150	17	2,233	1,650	618	4	33
1961	169	155	14	2,356	1,652	704	2	13
1962	174	155	14	2,467	1,723	744	3	14
1963	170	157	13	2,480	1,700	780	4	23
1964	182	167	15	2,672	1,832	840	7	26

Applicants and Accepted (As of the end of Oct., 1964)

Year	1950	1951	1952	1953	1954	1955	1956	1957	1958	1959	1960	1961	1962	1963	1964
Applicant	930	1,160	961	1,205	935	1,597	1,721	1,697	1,875	1,623	2,036	1,951	1,912	1,851	1,867
Accepted	502	322	536	556	568	525	514	533	563	625	612	636	655	640	798
Percentage	60.4	27.8	55.8	46.1	60.7	32.9	29.8	31.4	30.1	38.7	30.1	32.5	33.9	34.6	42.1

Men's Dormitory



Graduate Placement (As of the end of Oct., 1964)

Type	1953	1954	1955	1956	1957	1958	1959	1960	1961	1962	1963	1964
Elementary School		2		2	15	63	138	117	87	92	113	100
Junior High School	1	8	10	20	49	82	106	107	144	167	188	114
Senior High School	18	61	51	96	95	161	66	48	38	31	37	74
University	1	11	1	3	5	9	8	8	1	5	4	3
Civil Service	1	12	15	14	32	41	50	38	37	46	52	19
Finance Agency		5	3	3	5	4	9	18	13	10	15	19
Commercial Firm	3	9	2	5	4	4	20	37	55	53	41	57
Military Employees		9	4	1	10	12	20	39	25	22	11	16
Self Employed	1	1	1			2				2	2	
Others	1	1	2	3		1	6	11	3	7	5	4
Advanced Studies		1	4	10	13	6	21	23	15	21	12	9
Unknown		2		5	25	24	2	24	40	38	80	105
Total	26	122	93	162	253	409	446	471	451	497	570	520

Experimental Farm



Library

Books in Shikiya Memorial Library (As of the end of Oct., 1964)

Kind of Books	Number of Books		
	Japanese	English	Total
General	4,061	1,727	5,788
Philosophy	4,959	1,242	6,201
History	7,544	3,760	11,304
Social Science	21,885	5,624	26,909
Natural Science	10,975	4,273	15,248
Engineering	9,800	2,133	11,933
Industry	8,165	1,372	9,537
Art	3,926	705	4,631
Linguistics	2,971	1,158	4,129
Literature	10,817	4,808	15,625
Total	85,103	26,202	111,305

Enrollment (As of the end of Oct., 1964)

College	Department	Freshman		Sophomore		Junior		Senior		Total		Sub Total
		M	F	M	F	M	F	M	F	M	F	
		Arts and Science										
	Japanese Lite.	6	19	8	19	4	13	17	8	35	59	94
	English Lite.	36	21	40	15	40	10	40	5	156	51	207
	History	11	7	11	4	12	3	11	5	45	19	64
	Geography	9	4	6	1	11	0	13	0	39	5	44
	Law & Pol. sci.	58	1	45	1	43	1	34	0	180	3	183
	Sociology	14	3	12	5	10	5	9	3	45	16	61
	Economics	42	2	28	1	30	0	32	0	132	3	135
	Business Ad.	35	9	24	2	27	4	83	1	109	16	125
	Fine Arts	8	4	9	3	13	1	8	0	38	8	46
	Mathematics	20	5	13	1	13	3	15	0	61	9	70
	Physics	17	0	16	0	11	1	15	0	59	1	60
	Chemistry	12	3	11	3	11	0	12	1	46	7	53
	Biology	16	3	7	4	10	1	11	4	44	12	56
	Sub Total(Sex)	284	81	230	59	235	42	240	27	989	209	1,198
	Total	365		289		277		267		1,198		
Education												
	Education	9	10	4	10	10	2	7	4	30	26	56
	Elementary Ed.	27	106	28	89	36	94	50	119	141	408	549
	Music	5	7	2	9	4	6	3	7	14	29	43
	Physical Ed.	20	6	15	7	13	5	19	9	67	27	94
	Technical Ed.	21	0	18	0	20	1	18	0	77	1	78
	Sub Total(Sex)	82	129	67	115	83	108	97	139	329	491	820
	Total	211		182		191		236		820		
Agriculture, Home Economics & Engineering												
	Agriculture	33	0	24	1	25	1	24	1	106	3	109
	Agriculture Ch.	19	2	8	1	/	/	/	/	27	3	30
	Animal Hus.	21	0	13	0	18	0	15	0	67	0	67
	Forestry	20	0	14	0	14	0	13	0	61	0	61
	Home Eco.	0	39	0	33	1	30	0	29	1	131	132
	Mechanical Eng.	29	0	22	0	22	0	12	0	85	0	85
	Civil Eng.	20	0	14	0	14	0	14	0	62	0	62
	Electrical Eng.	25	0	20	0	24	0	15	0	84	0	84
	Sub Total(Sex)	167	41	115	35	118	31	93	30	493	131	630
	Total	208		150		149		123		630		
	Sub Total(Sex)	533	251	412	209	436	181	430	196	1,811	537	2,648
	GRAND TOTAL	784		621		617		626		2,648		

Teaching Staff and

Year	Teaching staff	
	Total	M
1950	28	25
1951	29	25
1952	49	44
1953	79	74
1954	101	92
1955	111	98
1956	126	111
1957	134	119
1958	139	124
1959	156	141
1960	167	150
1961	169	155
1962	174	155
1963	170	157
1964	182	167

Applicants and Accepted

Year	1950	1951	1952	1953	1954
Applicant	930	1,160	961	1,205	935
Accepted	562	322	536	556	568
Percentage	60.4	27.8	55.8	46.1	60.7





The present President



Badge

Brief History of the University

The University, first university in the Ryukyus, was formally opened on May 22, 1950 with a faculty of 44 and a student body of 512 enrolled in six colleges: English, Education, Social Science, Natural Science, Agriculture, and Applied Arts.

The University of the Ryukyus is the realization of a long cherished dream and desire of the Ryukyuan people for higher education.

Dr. Koshin Shikiya, former Governor of Okinawa, was appointed the first president of the University. The U.S. Civil Administration of the Ryukyu Islands (USCAR) issued Ordinance No. 30 in January 1951, prescribing in it basic rules governing the operation of the University.

To develop a program of assistance to the University of the Ryukyus, Michigan State University was chosen because it was a leading land-grant university, and it was thought desirable to pattern the University of the Ryukyus after the land-grant system.

With the great assistance of Education Department of USCAR, of U.S. Army, and of Michigan State University Consultant Group that has been sent to the University of the Ryukyus, tremendous progress has been made in the administration of the University, in the research projects and in the extension services.

The U.S. Civil Administration Ordinance No. 30 was rescinded and replaced by the CA Ordinance No. 66 in February 1952.

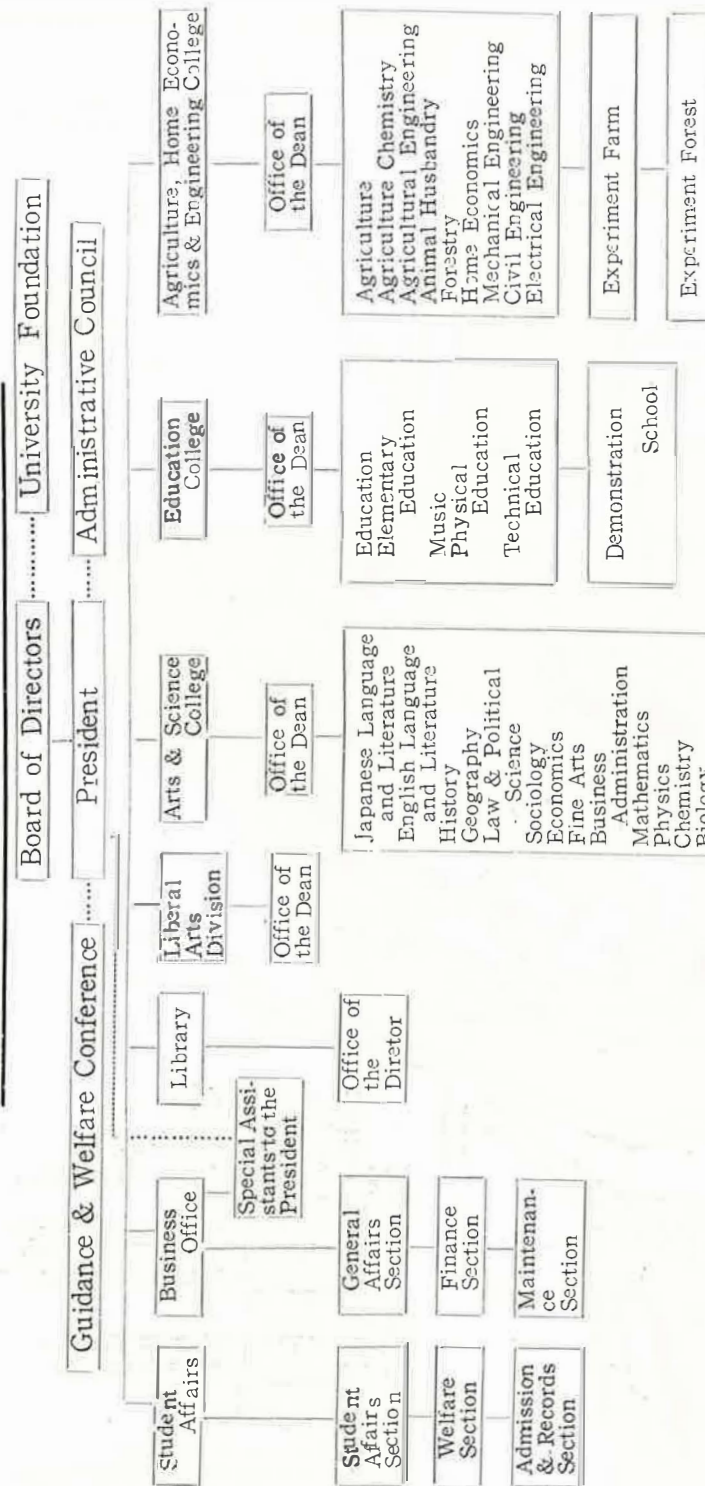
Under this new ordinance the University was made an agency of the Government of the Ryukyu Islands, but the responsibility for the operation and control of the University in all its phases was vested in the Board of Directors.

Established as a corporate entity and given an independent and autonomous governing board, the University of the Ryukyus is thus free from direct control of the Government and influence in its administration.

The Board of Directors has complete and entire control over the policies, management, finance, personnel, real and personal property and everything that pertains to the University.

In July 1964, Dr. Shunichi Shimabukuro was elected the fifth president.

THE ORGANIZATION OF THE RYUKYUS



Administration Building

Board of Directors

(As of Oct. 1, 1964)

Title	Name	Address
Chairman	Shoei Higa	605 Nago-cho
Vice-Chairman	Hiroshi Senaga	262 Daido-ku Naha-shi
Ex-officio	Choji Ahagon	6-banchi 1-chome Onaka-cho Naha
Director	Shiku Sakumoto	827-banchi Nakajima-ku Yorataru-cho
Director	Shojun Ishihara	723 Aza-Tobaru Misato-son
Director	Sonyu Yonahara	27-banchi Ishigaki Ishigaki-shi Yaeyama
Director	Kijin Fukumine	280-banchi Aza-Nishizato Taira-shi Miyako
Executive Secretary	Shunichi Shimabukuro	3-2-banchi Tonokura Naha-shi

Deans' Council

(As of Oct. 1, 1963)

President	Shunichi Shimabukuro
Dean, College of Arts & Science	Sadao Ikehara
Dean, College of Education	Hiroshi Kobashigawa
Dean, College of Agriculture, Home Economics & Engineering	Tetsuo Takara
Director of Library	Ken Miyagi
Business Manager	Chojun Maeshiro
Dean of Students	Yoshinobu Akamine

Teaching Staff

Dept.	Teaching Staff
Japanese Literature	
English Literature	
History	
Geography	
Law & Political Science	
Sociology	
Economics	
Business Administration	
Fine Arts	
Mathematics	
Physics	
Chemistry	
Biology	
Total	
College of Education	
Education	
Music	
Physical Education	
Technical Education	
Total	
College of Agriculture, Home Economics and Engineering	
Agriculture	
Forestry	
Animal Husbandry	
Agricultural Chemistry	
Home Economics	
Mechanical Engineering	
Civil Engineering	
Electrical Engineering	
Engineering Experiment Farm & Extension	
Total	
Grand Total	



Administration Building
(As of Oct. 1, 1964)

Faculty Name	Address
Higa	605 Nago-cho
Senaga	262 Daido-ku Naha-shi
Ahagon	6-banchi 1-chome Onaka-cho Naha
Sakumoto	827-banchi Nakajima-ku Yorataru-cho
Ishihara	723 Aza-Tobaru Misato-son
Yonahara	27-banchi Ishigaki Ishigaki-shi Yaeyama
Fukumine	280-banchi Aza-Nishizato Taira-shi Miyako
Shimabukuro	3-2-banchi Tonokura Naha-shi

(As of Oct. 1, 1963)

Faculty Name	Address
Shunichi Shimabukuro	
Sadao Ikehara	
Hiroshi Kobashigawa	
Tetsuo Takara	
Ken Miyagi	
Chojun Maeshiro	
Yoshinobu Akamine	

Teaching Staff (As of the end of Sept., 1964)

Dept.	Pro- fessor	Assist- ant Pro- fessor	Instruc- tor	Assist- ant	Associ- ate As- sistant	Total
Japanese Literature	2	3	1			6
English Literature	4	9	2			15
History	2	3				5
Geography	2	1	1			4
Law & Political Science	2	6	2			10
Sociology		2	3			5
Economics	2	2				4
Business Administration		3	1			4
Fine Arts	2	4				6
Mathematics	1	1	5			7
Physics	2	2	2		2	8
Chemistry	2	3	1		1	7
Biology	2	5	2			9
Total	23	44	20		3	90
College of Education						
Education	2	14	3			19
Music	1		1		2	4
Physical Education	1	4	3			8
Technical Education		2	3			5
Total	4	20	10		2	36
College of Agriculture, Home Economics and Engineering						
Agriculture	3	2	3			8
Forestry	1	4	1			6
Animal Husbandry	1	4				5
Agricultural Chemistry	1	1	3			5
Home Economics	1	2	2	2		7
Mechanical Engineering		1	4		1	6
Civil Engineering		1	3		1	5
Electrical Engineering		1	5		1	7
Experiment Farm & Extension		2	9		1	12
Total	7	18	30	2	4	62
Grand Total	34	82	60	2	9	187

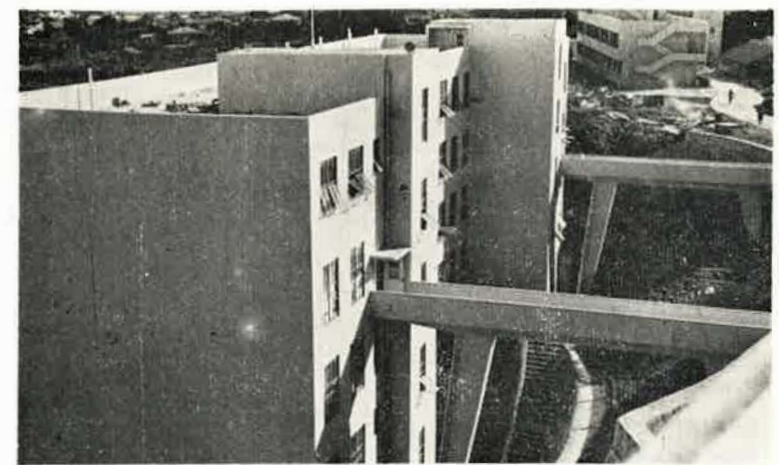
University Budget - \$ (1954-1965) (As of the end of Sept., 1964)

Fiscal year	Total Revenue	Education Budget & Subsidies			University's Own Revenues and Other
		GRI	USCAR	Sub-total	
1954	319,678.38	216,666.67	65,000.00	281,666.67	38,011.71
1955	382,322.50	253,750.00	90,000.00	343,750.00	38,572.50
1956	489,371.67	375,000.00	58,333.33	433,333.33	56,038.34
1957	600,560.00	491,666.67	25,000.00	516,666.67	83,893.33
1958	599,384.17	512,833.33	10,000.00	522,833.33	76,550.84
1959	865,372.00	592,167.00	190,000.00	719,167.00	146,205.00
1960	767,704.00	645,000.00		645,000.00	122,704.00
1961	994,633.00	697,670.00	225,000.00	922,670.00	71,963.00
1962	1,101,756.00	621,153.00	395,442.00	1,016,595.00	85,161.00
1963	1,198,443.00	784,562.00	315,000.00	1,099,562.00	98,881.00
1964	1,205,731.00	1,096,215.00		1,096,215.00	109,516.00
1965	1,334,375.00	1,206,825.00		1,206,825.00	127,550.00

Fiscal year	Total Expenditure	Operation Expense			Equipment and Building
		Personnel	Operation	Sub-total	
1954	319,678.38	124,894.68	49,465.08	174,359.76	145,318.62
1955	382,322.50	169,389.17	72,160.83	241,550.00	140,772.50
1956	489,371.67	185,858.00	96,929.17	282,814.17	206,557.50
1957	600,560.00	226,128.33	101,134.17	327,262.50	273,297.50
1958	599,384.17	269,480.83	104,559.17	374,040.00	225,344.17
1959	865,372.00	306,604.00	117,258.00	423,862.00	441,510.00
1960	767,704.00	354,899.00	147,790.00	502,689.00	406,523.00
1961	994,633.00	393,019.00	195,091.00	588,110.00	462,243.00
1962	1,101,756.00	463,304.00	140,687.00	603,991.00	448,000.00
1963	1,198,443.00	604,419.00	146,024.00	750,443.00	335,750.00
1964	1,205,731.00	673,749.00	174,232.00	847,981.00	357,750.00
1965	1,334,375.00	847,266.00	188,889.00	1,036,155.00	298,200.00



Arts Building



Science Building

Administrative Staff (As of the end of Sept., 1964)

Department	Section	Deans	Clerical Job (I)					Clerical Job (II)					Medic. Techn. Job					Total			
			Grade					Grade					Grade								
			1	2	3	4	5	1	2	3	4	5	1	2	3	4	5				
Business Office (Manager)	Special Assistants to the President	1																	1		
	General Affairs		1	3	1	2											6	2	25		
	Finance	1	1	4	8	5											12		30		
Student Affairs (Dean)	Maintenance		1	1			3	3	2								8		18		
	Admin. & Recs		1	3	10														14		
	Student Affairs	(1)	1	1	3	6											4	2	24		
Office of the Colleges (Deans)	Student Welfare		1	2	1	1						2							7		
	Arts & Science	(1)	1	1	3	5					1						1	3	15		
	Education	(1)	1	1	3	1					1	2						1	1	11	
Office of Liberal Arts Division (Dean)	Agriculture, Home Economics & Engineering	(1)	1	1	6	5					2	4						2	6	27	
	Library (Director)	(1)	1	6	11	3													1	22	
Total		1 (5)	2	10	24	60	22	3	6	9	2								34	33	206

Num

Year
1950
1951
1952
1953
1954
1955
1956
1957
1958
1959
1960
1961
1962
1963
1964

Board of

Chairman
Director
Director
Director
Director
Director
Director
Ex-officio
Ex-officio
Ex-officio
Ex-officio



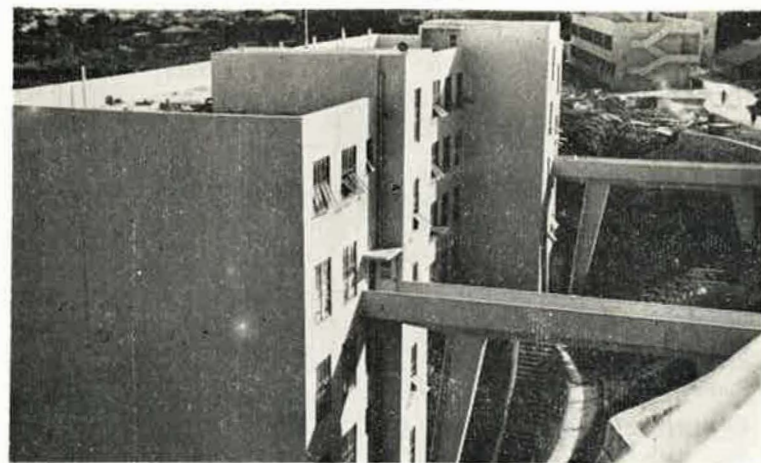
Budget-\$ (1954-1965) (As of the end of Sept., 1964)

Total Revenue	Education Budget & Subsidies			University's Own Revenues and Other
	GRI	USCAR	Sub-total	
1,678.38	216,666.67	65,000.00	281,666.67	98,011.71
1,322.50	253,750.00	90,000.00	343,750.00	98,572.50
1,371.67	375,000.00	58,933.33	433,933.33	56,038.34
1,560.00	491,666.67	25,000.00	516,666.67	83,893.93
1,384.17	512,833.33	10,000.00	522,833.33	76,550.84
1,372.00	592,167.00	190,000.00	719,167.00	146,205.00
1,704.00	645,000.00		645,000.00	122,704.00
1,633.00	697,670.00	225,000.00	922,670.00	71,563.00
1,756.00	621,153.00	395,442.00	1,016,575.00	85,181.00
1,443.00	784,562.00	315,000.00	1,099,562.00	98,881.00
1,731.00	1,096,215.00		1,096,215.00	109,515.00
1,375.00	1,206,825.00		1,206,825.00	127,550.00

Total Expenditure	Operation Expense			Equipment and Building
	Personnel	Operation	Sub-total	
1,678.38	124,894.68	49,465.08	174,359.76	145,318.62
1,322.50	169,389.17	72,160.83	241,550.00	140,772.50
1,371.67	185,858.00	96,929.17	282,814.17	206,557.50
1,560.00	226,128.33	101,134.17	327,262.50	273,257.50
1,384.17	269,480.83	104,559.17	374,040.00	225,344.17
1,372.00	306,604.00	117,258.00	423,862.00	441,510.00
1,704.00	354,899.00	147,790.00	502,689.00	406,523.00
1,633.00	393,019.00	195,091.00	588,110.00	462,243.00
1,756.00	463,304.00	140,687.00	603,991.00	448,000.00
1,443.00	604,419.00	146,024.00	750,443.00	535,750.00
1,731.00	673,749.00	174,232.00	847,981.00	357,750.00
1,375.00	847,266.00	188,889.00	1,036,175.00	298,200.00



Arts Building



Science Building

Administrative Staff (As of the end of Sept., 1964)

Department	Section	Deans	Clerical Job (I)				Clerical Job (II)				Medic. Techni. Job				Total	
			Grade				Grade				Grade					
			1	2	3	4	1	2	3	4	1	2	3	4		
Business Office (Manager)	Special Assistants to the President	1													1	
	General Affairs	1	1	3	1	2								6	2	25
	Finance		1	4	8	5								12		30
	Maintenance		1		1			3	3	2				8		18
Student Affairs (Dean)	Admission & Records	(1)	1	3	10											14
	Student Affairs		1	1	3	6								4	20	24
	Student Welfare		1	2	1	1					2					7
Office of the Colleges (Deans)	Arts & Science	(1)	1	1	3	5				1				1	3	15
	Education	(1)	1	1	3	1				1	2			1	1	11
	Agriculture, Home Economics & Engineering	(1)	1	1	6	5				2	4			2	6	27
Office of Liberal Arts Division (Dean)																
Library (Director)	(1)	1	6	11	3										1	22
Total		(5)	2	10	24	60	22	3	6	9	2			34	33	206

Number of Subjects (As of the end of Sept., 1964)

Year	Liberal Arts	Major	Total
1950	25		25
1951	37	23	60
1952	28	256	284
1953	28	303	331
1954	37	331	368
1955	43	420	463
1956	45	442	487
1957	45	554	599
1958	46	591	637
1959	48	615	663
1960	53	715	768
1961	53	750	803
1962	55	807	862
1963	56	915	971
1964	57	1,001	1,058

Board of Directors of the Foundation (As of the end of Sept., 1964)

Chairman	Ichiro Inamine	President, Ryukyu Oil Company
Director	Kotaro Kokuta	President, Kokuta Construction Company
Director	Moriyasu Tomihara	
Director	Jinshiro Miyagi	President, Daito Sugar Company
Director	Roy K. Nakada	Attorney
Director	Kotaro Kamimura	
Director	Nobuo Takamura	President, Ryukyu Development Loan Corporation
Ex-officio	Jeanett K. Fink	Director, Education Department, USCAR
Ex-officio	Iwao Ishino	Administration Consultant to University of the Ryukyus
Ex-officio	Shunichi Shimabukuro	President, University of the Ryukyus
Ex-officio	Chojun Maeshiro	Business Manager, University of the Ryukyus



Education Building



Gymnasium

Major Buildings Completed (As of the end of Sept., 1964)

- 1950 A stone two storied Administration Building and eight wooden Classroom Buildings. These wooden buildings were removed to make space for the permanent classroom buildings.
- 1951 Four wooden Women's Dormitory and A wooden Dining room, Wooden temporary Auditorium, Livestock Building for practice, Workshop for engineering.
- 1952 Three-storied Agriculture Building and Diningroom attached to Men's Dormitory.
- 1953 A Three storied Men's Dormitory.
- 1954 Another three-storied Men's Dormitory and a Hot-house.
- 1955 A three-storied Vocational Education Building, Two wooden classroom buildings and a five-storied Shikiya Memorial Library.
- 1956 A five-storied Science Building and A wooden temporary Gymnasium.
- 1957 Hot-house and remodelling of the old Administration Building.
- 1958 A three-storied Education Building and a Health Center.
- 1959 A three-storied Arts Building.
- 1960 A two-storied Women's Dormitory.
- 1961 Machine Workshop for vocational agriculture and a wooden building for China and pottery.
- 1962 Gymnasium.
- 1963 A three-storied Civil Engineering Building and Mechanical and Electrical Engineering Building. Ceramic Research Institute.