

Michigan Agricultural College.



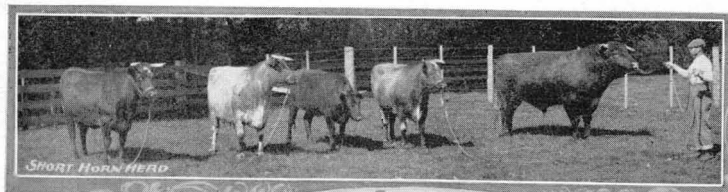
1900		JANUARY					1900	
Sun	Mon	Tue	Wed	Thu	Fri	Sat		
..	1	2	3	4	5	6		
7	8	9	10	11	12	13		
14	15	16	17	18	19	20		
21	22	23	24	25	26	27		
28	29	30	31		
..	☉ N.M. 1/30	☾ F.Q. 8	☼ F.M. 15	☾ L.Q. 23		

The enrollment in four year Courses for the fall term of each of the past five years was as follows: 1895, 220; '96, 252; '97, 382; '98, 441; '99, 550. Attendance has almost trebled in four years.

Winter term begins Tuesday, January 2.

Special winter Courses in Dairying, Stock Husbandry, Fruit Culture, Winter Vegetable Growing, begin January 2.

Michigan Agricultural College.



SHORT HORN HERD



JUDGING OF STOCK



HOLSTEIN HERD

Fine herds of cattle, sheep, and swine; orchards, gardens, museums, shops, etc., furnish ample illustrative material.

Special Course in Cheesemaking begins February 9, and will continue four weeks.

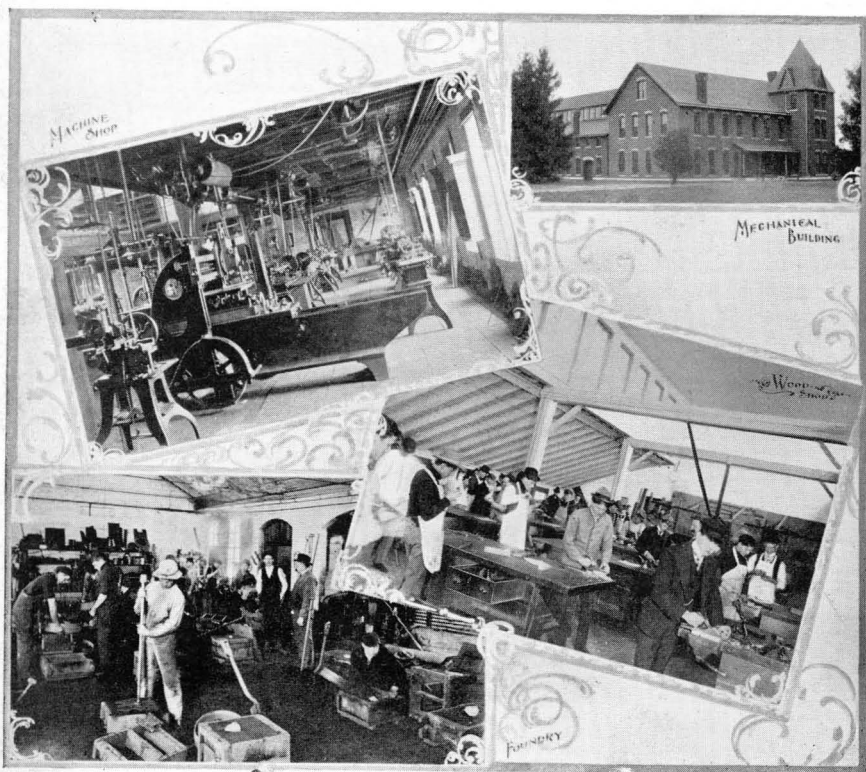
There are ten separate laboratories, 54 college buildings, and a corps of 47 professors and assistants.

1900		FEBRUARY					1900	
Sun	Mon	Tue	Wed	Thu	Fri	Sat		
..	1 32	2 33	3 34		
4 35	5 36	6 37	7 38	8 39	9 40	10 41		
11 42	12 43	13 44	14 45	15 46	16 47	17 48		
18 49	19 50	20 51	21 52	22 53	23 54	24 55		
25 56	26 57	27 58	28 59		
..	☾ F. Q. 6	☼ F. M. 14	☾ L. Q. 22		

The College offers three four-year Courses: The Agricultural, The Mechanical, The Women's; all include general culture studies; all require manual training; all are practical; all lead to the B. S. degree.

The principle of education at this College is: "To learn to see by seeing; to learn to do by doing."

Michigan Agricultural College.



1900		MARCH					1900	
Sun	Mon	Tue	Wed	Thu	Fri	Sat		
..	1 60	2 61	3 62		
4 63	5 64	6 65	7 66	8 67	9 68	10 69		
11 70	12 71	13 72	14 73	15 74	16 75	17 76		
18 77	19 78	20 79	21 80	22 81	23 82	24 83		
25 84	26 85	27 86	28 87	29 88	30 89	31 90		
..	☉ N.M.1/30	☾ F.Q. 8	☀ F.M.16	☾ L.Q. 24		

Winter term ends March 23.
 Machine shops, wood shops, foundry, blacksmith shop. Thorough training in mathematics, drafting and mechanical engineering. The mechanical course is practically equivalent to that given in the large universities and technical schools of the country.
 The annual income of the College from the U. S. Government is about \$95,000. The last Legislature granted the College \$95,000 for a women's building, \$15,000 for a dairy building, and \$4,000 for a farm barn.

Michigan Agricultural College.

and Agri. Eng. Co. Bldg.

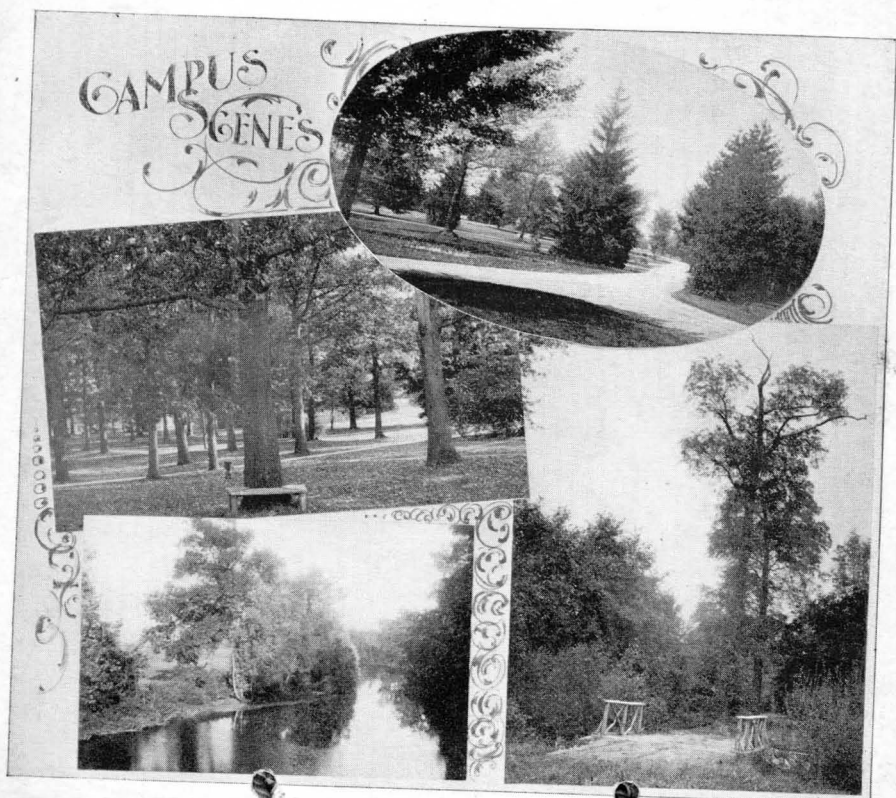


1900		APRIL					1900	
Sun	Mon	Tue	Wed	Thu	Fri	Sat		
1	2 92	3 93	4 94	5 95	6 96	7 97		
8	9 99	10 100	11 101	12 102	13 103	14 104		
15	16 106	17 107	18 108	19 109	20 110	21 111		
22	23 113	24 114	25 115	26 116	27 117	28 118		
29	30 120		
..	☾ F Q 6	☼ F M 14	☾ L Q 24	☼ N M 29		

Spring term begins April 2.

Fine collection in Zoology and Entomology of over 100,000 specimens. Botanical Garden with 1,900 different species of plants. Botanical building with a collection of 70,000 specimens. Splendidly equipped Chemical and Physical Laboratories.

Michigan Agricultural College.



1900		M A Y					1900	
Sun	Mon	Tue	Wed	Thu	Fri	Sat		
..	..	1 <small>121</small>	2 <small>122</small>	3 <small>123</small>	4 <small>124</small>	5 <small>125</small>		
6	7 <small>127</small>	8 <small>128</small>	9 <small>129</small>	10 <small>130</small>	11 <small>131</small>	12 <small>132</small>		
13	14 <small>134</small>	15 <small>135</small>	16 <small>136</small>	17 <small>137</small>	18 <small>138</small>	19 <small>139</small>		
20	21 <small>141</small>	22 <small>142</small>	23 <small>143</small>	24 <small>144</small>	25 <small>145</small>	26 <small>146</small>		
27	28 <small>148</small>	29 <small>149</small>	30 <small>150</small>	31 <small>151</small>		
..	☾ F Q 6	☼ F M 14	☾ L Q 21	☼ N M 28		

Special sugar beet Course given during this month.

671 acres in the entire farm; of this about 60 acres are beautifully laid out, and show the best skill of the landscape gardener, forming a veritable park—undoubtedly the finest college campus in the West.

Michigan Agricultural College

Prof. H. H. Day & Co. Men



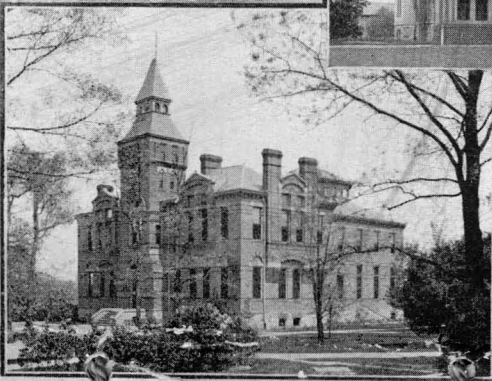
Intercollegiate Field Day, first week in June.
 Baccalaureate sermon, June 10. Alumni reunion June 14. Commencement Day, June 15.
 Military drill is required of all male students; all women students have drill in calisthenics.
 Send for Catalog.

1900		JUNE					1900	
Sun	Mon	Tue	Wed	Thu	Fri	Sat		
..	1	2		
					152	153		
3	4	5	6	7	8	9		
	155	156	157	158	159	160		
10	11	12	13	14	15	16		
	162	163	164	165	166	167		
17	18	19	20	21	22	23		
	169	170	171	172	173	174		
24	25	26	27	28	29	30		
	176	177	178	179	180	181		
..	3	☾	☾	☾	☾	
			F Q 5	F M 12	L Q 19	N M 26		

"We have schools to teach the art of manslaying and to make masters of 'deep-throated engines of war;' and shall we not have schools to teach men the way to feed, clothe and enlighten the great brotherhood of man?"
 —Justin S. Morrill.

Michigan Agricultural College

Inc. March 1st 1862

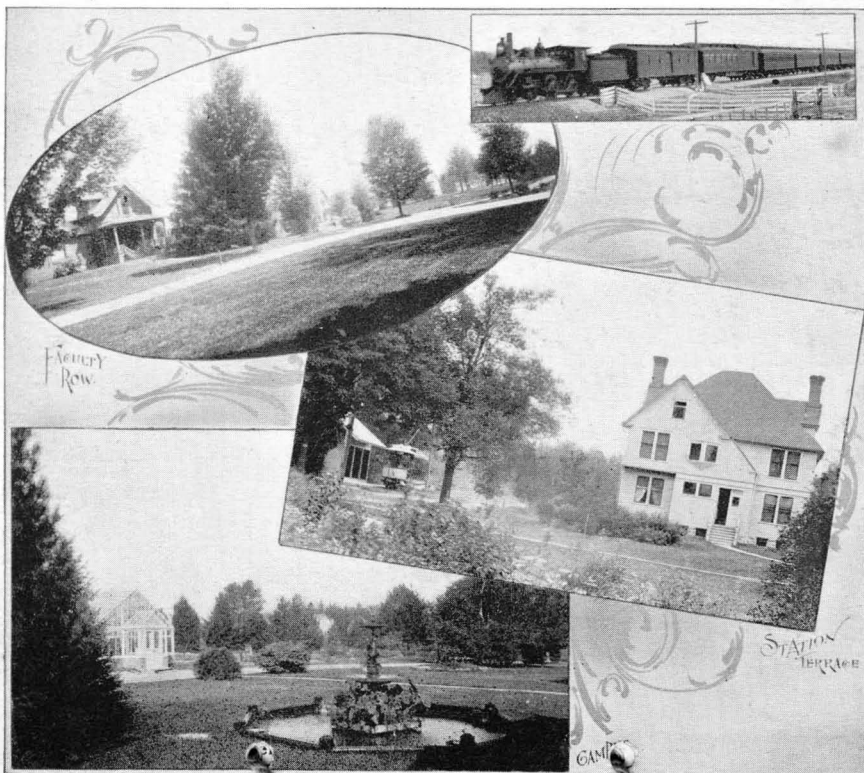


1900		JULY					1900	
Sun	Mon	Tue	Wed	Thu	Fri	Sat		
1	2 <small>189</small>	3 <small>184</small>	4 <small>185</small>	5 <small>186</small>	6 <small>187</small>	7 <small>188</small>		
8	9 <small>190</small>	10 <small>191</small>	11 <small>192</small>	12 <small>193</small>	13 <small>194</small>	14 <small>195</small>		
15	16 <small>197</small>	17 <small>198</small>	18 <small>199</small>	19 <small>200</small>	20 <small>201</small>	21 <small>202</small>		
22	23 <small>204</small>	24 <small>205</small>	25 <small>206</small>	26 <small>207</small>	27 <small>208</small>	28 <small>209</small>		
29	30 <small>211</small>	31 <small>212</small>		
..	☾ <small>F Q 4</small>	☼ <small>F M 12</small>	☾ <small>L Q 19</small>	☼ <small>N M 26</small>		

The moral influences surrounding students are wholesome and adequate. Chapel exercises every morning and preaching every Sunday. The Y. M. C. A. and Y. W. C. A. are active and earnest. Lansing churches are easily accessible. No student can remain who is not a gentleman or a lady in the highest sense of these terms.

Michigan Agricultural College

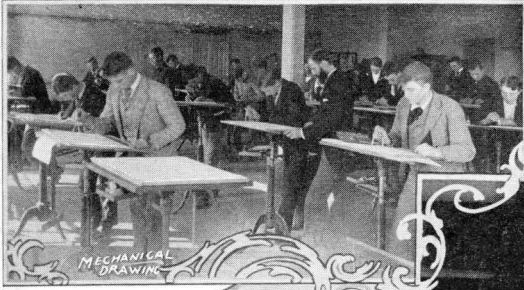
Wm. Rogers Eng Co. Men



1900		AUGUST					1900	
Sun	Mon	Tue	Wed	Thu	Fri	Sat		
..	1 213	2 214	3 215	4 216		
5	6 218	7 219	8 220	9 221	10 222	11 223		
12 225	13 226	14 227	15 228	16 229	17 230	18 231		
19 232	20 233	21 234	22 235	23 236	24 237	25 238		
26 239	27 240	28 241	29 242	30 243	31 244	..		
..	☾ F Q 3	☼ F M 10	☾ L Q 17	☼ N M 24		

Excursions to the College during the week beginning Monday, August 13. Trains will land you on the campus without change of cars. Plan to visit the College at this time. 6,000 people visited the College during excursion week last year.
 An electric car line runs from Lansing to the center of the grounds. Cars every half hour.
 New railroad from D. G. R. & W. and Grand Trunk to campus.
 The College has its own Water System and Electric Lighting Plant.

Michigan Agricultural College.



Fall term begins September 10.
 College Societies: Y. M. C. A., Y. W. C. A., King's Daughters, Botanical Club, Natural History Society, Farmers' Club, and Tau Beta Pi Fraternity. Literary Societies: Hesperian, Eclectic, Olympic, Columbian, Union Literary, Phi Delta, and Adelpic for young men; Feronian and Themian for young women.

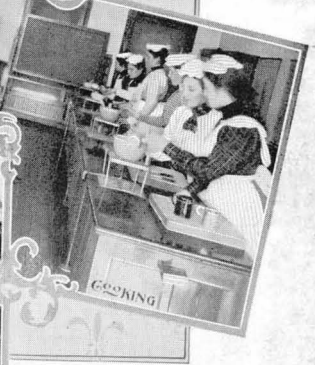
1900		SEPTEMBER					1900	
Sun	Mon	Tue	Wed	Thu	Fri	Sat		
..	1	244	
2	3	4	5	6	7	8	245	
9	10	11	12	13	14	15	246	
16	17	18	19	20	21	22	247	
23	24	25	26	27	28	29	248	
30	☾ F Q 2	☼ F M 8	☾ L Q 15	☼ N M 23	249	

"It will not be doubted that with reference to either individual or national welfare, agriculture is of primary importance. Institutions for promoting it grow up supported by the public purse, and to what object can it be dedicated with greater propriety?"

—George Washington.

Michigan Agricultural College.

Geo. H. H. Co. Min.



The Women's Course gives, in addition to other studies, a thorough training in English, mathematics, history, literature, French, German, botany, chemistry, bacteriology, natural philosophy, civics, domestic economy, cooking, sewing, floriculture, art, music. Free instruction on the piano to young women taking the regular course.

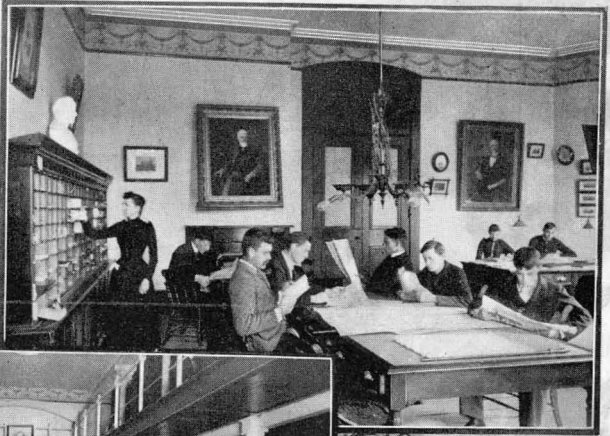
1900		OCTOBER					1900	
Sun	Mon	Tue	Wed	Thu	Fri	Sat		
..	1 274	2 275	3 276	4 277	5 278	6 279		
7	8 281	9 282	10 283	11 284	12 285	13 286		
14	15 288	16 289	17 290	18 291	19 292	20 293		
21	22 295	23 296	24 297	25 298	26 299	27 300		
28	29 302	30 303	31 304		
..	☾ F Q 1/31	☺ F M 8	☾ L Q 15	☀ N M 23		

"The general object in teaching domestic economy is always understood to be the betterment of homes."
—Mrs. Nellie Kedsie.

"Let those things that have to be done be learned by doing them."
—Comenius.

Michigan Agricultural College.

G. H. R. H. Eng. G. Max.



LIBRARY



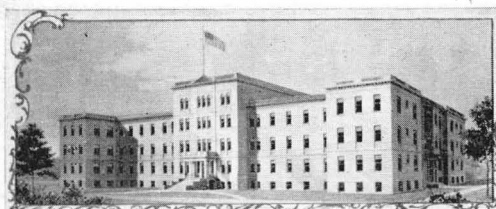
CORNER OF READING ROOM

1900		NOVEMBER					1900	
Sun	Mon	Tue	Wed	Thu	Fri	Sat		
..	1 305	2 306	3 307		
4	5 309	6 310	7 311	8 312	9 313	10 314		
11	12 316	13 317	14 318	15 319	16 320	17 321		
18	19 323	20 324	21 325	22 326	23 327	24 328		
25	26 330	27 331	28 332	29 333	30 334	..		
..	☾ F M 6	☾ L Q 13	☾ N M 22	☾ F Q 29		

The library of 21,000 volumes, and the reading room, containing the leading magazines of the country and nearly all the newspapers of the State, are accessible to students from 8:00 a. m. until 9:00 p. m.

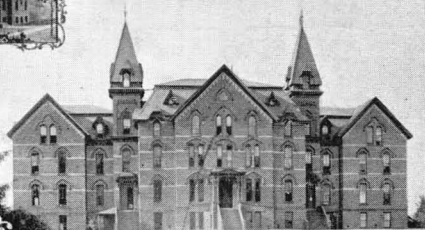
The oldest Agricultural College in the United States. Opened 1857. Now has an equipment worth over Half a Million Dollars.

Michigan Agricultural College



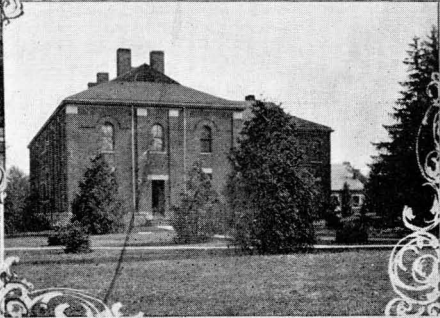
WOMEN'S BUILDING

WELL'S HALL



WILLIAMS HALL

ABBOT HALL



1900		DECEMBER					1900	
Sun	Mon	Tue	Wed	Thu	Fri	Saf		
..	1 335		
2	3 337	4 338	5 339	6 340	7 341	8 342		
9	10 344	11 345	12 346	13 347	14 348	15 349		
16	17 351	18 352	19 353	20 354	21 355	22 356		
23	24 358	25 359	26 360	27 361	28 362	29 363		
30 365	31	..	☾ FM 6	☾ LQ 13	☾ FQ 21	☾ NM 28		

Fall term closes December 14 for holiday vacation

Many students find opportunity for remunerative work. The necessary expenses are very low. There is no tuition. Room rent and board can be secured on very moderate terms.

Experiment Station bulletins sent free on request to any address in the State.